

Genotype: AOF D10

Screened

- T0 mature plant
- T1 seed
- T1 seedling
- T1 mature plants

Expression

- None
- Bright
- Medium
- Weak
- Unsure

Pictures

T0 mature plant:

T1 seed/seedling: 1

T1 mature plant:

T0 Flower

- YES
- POSSIBLE
- Stamen: anther
- Stamen: filament
- Carpel: stigma
- Carpel: style
- Carpel: ovary
- Carpel: base
- Lemma/palea
- Lodicule
- Rachilla
- Sterile lemma
- Pedicel
- Guard cells
- Trichomes
- Vascular

T0 Blade

- YES
- POSSIBLE
- Vascular
- Guard cells
- Trichomes
- Mesophyll

T0 Sheath

- YES
- POSSIBLE
- Collar
- Vascular
- Trichomes
- Guard cells
- Mesophyll

T1 Seed

- YES
- POSSIBLE
- Embryo
- Coleorhiza
- Scutellum
- Aleurone/Endo.
- Vasc. bundle

T1 Seedling

- YES
- POSSIBLE
- SHOOT
- ROOT
- ENDOSPERM
- Coleoptile
- Sheath tissue
- Blade tissue
- Leaf tip
- Collar
- Trichomes
- Guard cells
- S. vascular
- Seminal root
- Crown roots
- Lateral roots
- Root cap
- Root apex
- R. stele
- R. cortex/end.
- R. epidermis
- Constitutive

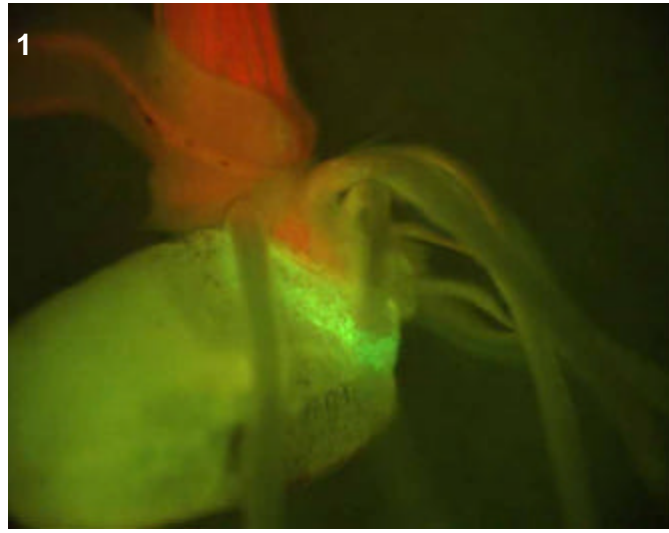
T1 Mature

- T0 pattern verified:
- T0 pattern verified plus:
- New pattern:
- No GFP detected

T1 in greenhouse?
YES, 2 GFP+ plants

Confocal?

Number T2 seed produced: 127



T0 comments

T1 seed comments

T1 seedling comments

Area near the scutellum/aleurone appears bright.

Genotype: AOG F03

Screened

- T0 mature plant
- T1 seed
- T1 seedling
- T1 mature plants

Expression

- None
- Bright
- Medium
- Weak
- Unsure

Pictures

T0 mature plant:

T1 seed/seedling: 1-2

T1 mature plant:

T0 Flower

- YES
- POSSIBLE
- Stamen: anther
- Stamen: filament
- Carpel: stigma
- Carpel: style
- Carpel: ovary
- Carpel: base
- Lemma/palea
- Lodicule
- Rachilla
- Sterile lemma
- Pedicel
- Guard cells
- Trichomes
- Vascular

T0 Blade

- YES
- POSSIBLE
- Vascular
- Guard cells
- Trichomes
- Mesophyll

T0 Sheath

- YES
- POSSIBLE
- Collar
- Vascular
- Trichomes
- Guard cells
- Mesophyll

T1 Seed

- YES
- POSSIBLE
- Embryo
- Coleorhiza
- Scutellum
- Aleurone/Endo.
- Vasc. bundle

T1 Seedling

- YES
- POSSIBLE
- SHOOT
- ROOT
- ENDOSPERM
- Coleoptile
- Sheath tissue
- Blade tissue
- Leaf tip
- Collar
- Trichomes
- Guard cells
- S. vascular
- Seminal root
- Crown roots
- Lateral roots
- Root cap
- Root apex
- R. stele
- R. cortex/end.
- R. epidermis
- Constitutive

T1 Mature

T0 pattern verified:

T0 pattern verified plus:

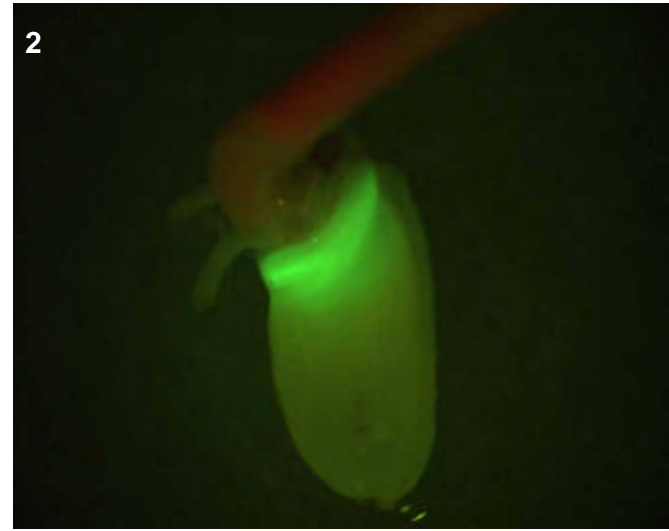
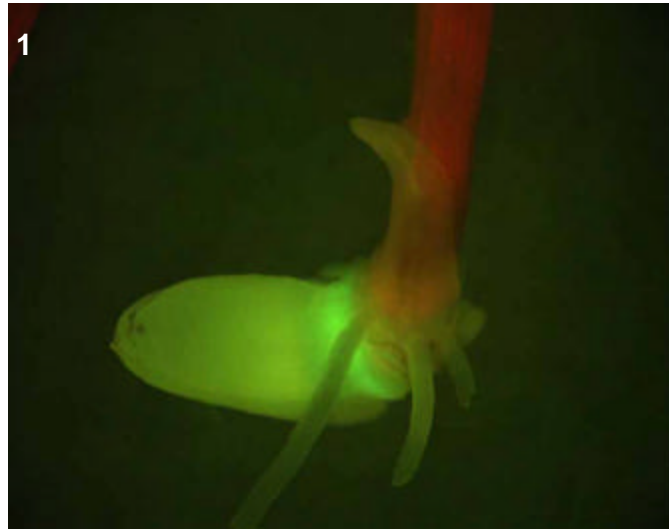
New pattern:

No GFP detected

T1 in greenhouse?
YES, 3 GFP+ plants

Confocal?

Number T2 seed produced: 173



T0 comments

T1 seed comments

T1 seedling comments

Expression appears specific to the endosperm.

Genotype: AOM C12

Screened

- T0 mature plant
- T1 seed
- T1 seedling
- T1 mature plants

Expression

- None
- Bright
- Medium
- Weak
- Unsure

Pictures

T0 mature plant:

T1 seed/seedling: 1-2

T1 mature plant:

T0 Flower

- YES
- POSSIBLE
- Stamen: anther
- Stamen: filament
- Carpel: stigma
- Carpel: style
- Carpel: ovary
- Carpel: base
- Lemma/palea
- Lodicule
- Rachilla
- Sterile lemma
- Pedicel
- Guard cells
- Trichomes
- Vascular

T0 Blade

- YES
- POSSIBLE
- Vascular
- Guard cells
- Trichomes
- Mesophyll

T0 Sheath

- YES
- POSSIBLE
- Collar
- Vascular
- Trichomes
- Guard cells
- Mesophyll

T1 Seed

- YES
- POSSIBLE
- Embryo
- Coleorhiza
- Scutellum
- Aleurone/Endo.
- Vasc. bundle

T1 Seedling

- YES
- POSSIBLE
- SHOOT
- ROOT
- ENDOSPERM
- Coleoptile
- Sheath tissue
- Blade tissue
- Leaf tip
- Collar
- Trichomes
- Guard cells
- S. vascular
- Seminal root
- Crown roots
- Lateral roots
- Root cap
- Root apex
- R. stele
- R. cortex/end.
- R. epidermis
- Constitutive

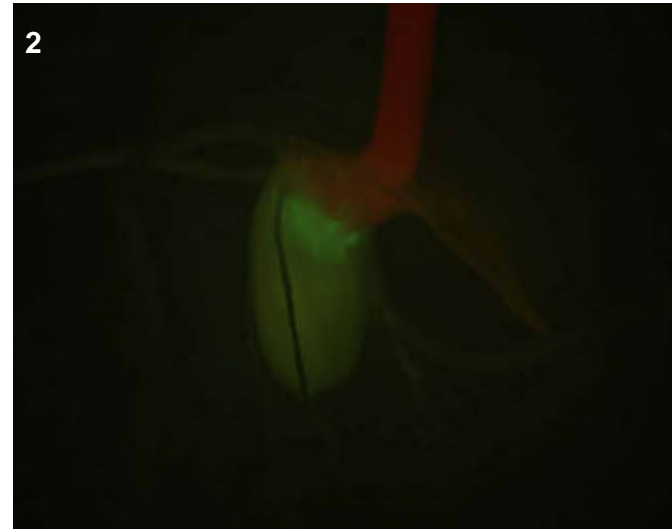
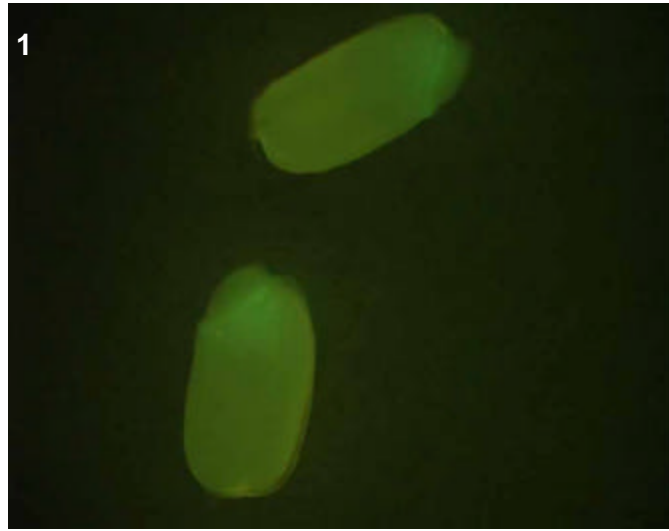
T1 Mature

- T0 pattern verified:
- T0 pattern verified plus:
- New pattern:
- No GFP detected

T1 in greenhouse?
YES, 2 GFP+ plants

Confocal?

Number T2 seed produced: 25



T0 comments

T1 seed comments

4/5 seeds show expression

T1 seedling comments

Thought it was embryo expression in the seed, but now think it must have been endosperm based on the seedling result. This looks to be an endosperm-specific line.

Genotype: AOO C07

Screened

- T0 mature plant
- T1 seed
- T1 seedling
- T1 mature plants

Expression

- None
- Bright
- Medium
- Weak
- Unsure

Pictures

T0 mature plant:

T1 seed/seedling: 1

T1 mature plant:

T0 Flower

- YES
- POSSIBLE
- Stamen: anther
- Stamen: filament
- Carpel: stigma
- Carpel: style
- Carpel: ovary
- Carpel: base
- Lemma/palea
- Lodicule
- Rachilla
- Sterile lemma
- Pedicel
- Guard cells
- Trichomes
- Vascular

T0 Blade

- YES
- POSSIBLE
- Vascular
- Guard cells
- Trichomes
- Mesophyll

T0 Sheath

- YES
- POSSIBLE
- Collar
- Vascular
- Trichomes
- Guard cells
- Mesophyll

T1 Seed

- YES
- POSSIBLE
- Embryo
- Coleorhiza
- Scutellum
- Aleurone/Endo.
- Vasc. bundle

T1 Seedling

- YES
- POSSIBLE
- SHOOT
- ROOT
- ENDOSPERM
- Coleoptile
- Sheath tissue
- Blade tissue
- Leaf tip
- Collar
- Trichomes
- Guard cells
- S. vascular
- Seminal root
- Crown roots
- Lateral roots
- Root cap
- Root apex
- R. stele
- R. cortex/end.
- R. epidermis
- Constitutive

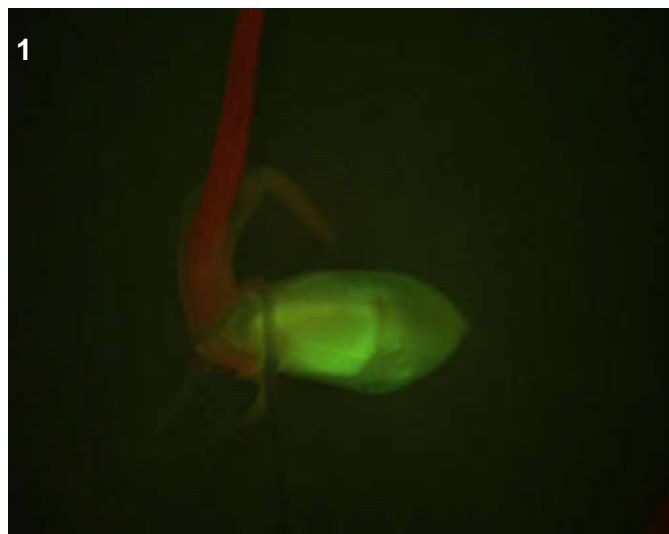
T1 Mature

- T0 pattern verified:
- T0 pattern verified plus:
- New pattern:
- No GFP detected

T1 in greenhouse?
YES, 2 GFP+ plants

Confocal?

Number T2 seed produced: 1



T0 comments

T1 seed comments

T1 seedling comments

Endosperm-specific line.

Genotype: AOT F07

Screened

- T0 mature plant
- T1 seed
- T1 seedling
- T1 mature plants

Expression

- None
- Bright
- Medium
- Weak
- Unsure

Pictures

T0 mature plant:

T1 seed/seedling: 1

T1 mature plant: 2-3

T0 Flower

- YES
- POSSIBLE
- Stamen: anther
- Stamen: filament
- Carpel: stigma
- Carpel: style
- Carpel: ovary
- Carpel: base
- Lemma/palea
- Lodicule
- Rachilla
- Sterile lemma
- Pedicel
- Guard cells
- Trichomes
- Vascular

T0 Blade

- YES
- POSSIBLE
- Vascular
- Guard cells
- Trichomes
- Mesophyll

T0 Sheath

- YES
- POSSIBLE
- Collar
- Vascular
- Trichomes
- Guard cells
- Mesophyll

T1 Seed

- YES
- POSSIBLE
- Embryo
- Coleorhiza
- Scutellum
- Aleurone/Endo.
- Vasc. bundle

T1 Seedling

- YES
- POSSIBLE
- SHOOT
- ROOT
- ENDOSPERM
- Coleoptile
- Sheath tissue
- Blade tissue
- Leaf tip
- Collar
- Trichomes
- Guard cells
- S. vascular
- Seminal root
- Crown roots
- Lateral roots
- Root cap
- Root apex
- R. stele
- R. cortex/end.
- R. epidermis
- Constitutive

T1 Mature

T0 pattern verified:

T0 pattern verified plus:

New pattern:

Bright collar and sheath vascular, flowers were too old to examine.

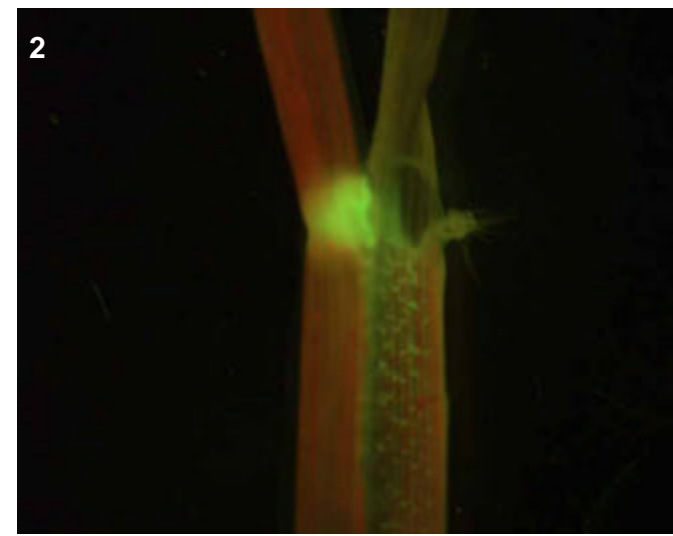
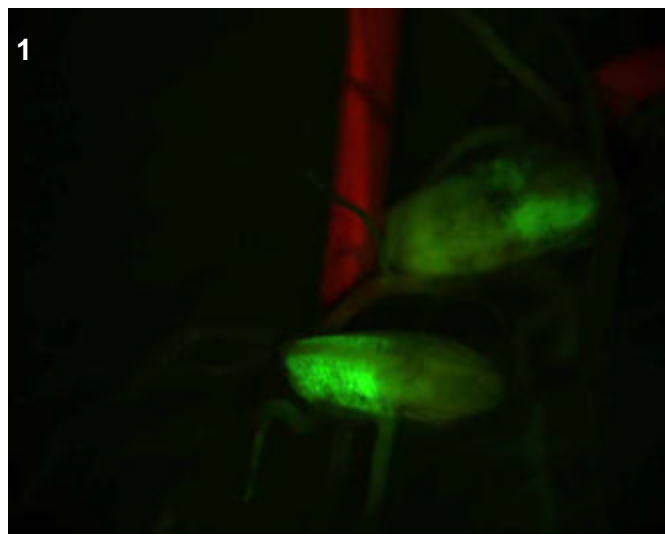
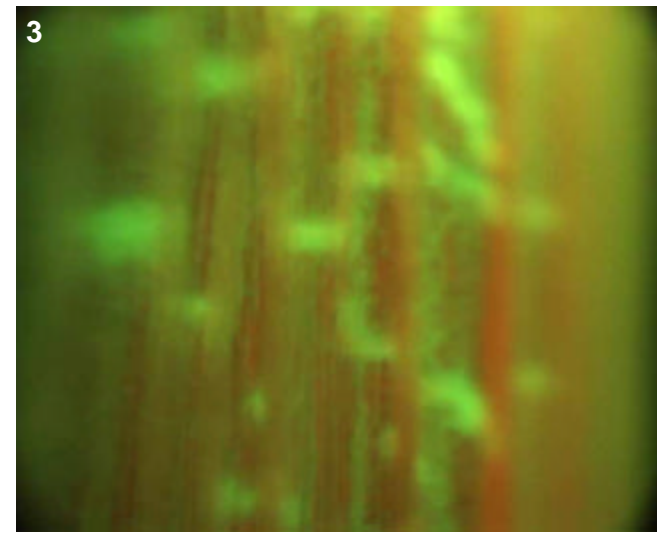
No GFP detected

T1 in greenhouse?

YES, 2 GFP+ plants

Confocal?

Number T2 seed produced: 189



T0 comments

T1 seed comments

Seed shows scutellum expression four days post-germination.

T1 seedling comments

Expression in the endosperm.

Genotype: AOY A07

Screened

- T0 mature plant
- T1 seed
- T1 seedling
- T1 mature plants

Expression

- None
- Bright
- Medium
- Weak
- Unsure

Pictures

T0 mature plant: 1-4
 T1 seed/seedling: 5
 T1 mature plant:

T0 Flower

- YES
- POSSIBLE
- Stamen: anther
- Stamen: filament
- Carpel: stigma
- Carpel: style
- Carpel: ovary
- Carpel: base
- Lemma/palea
- Lodicule
- Rachilla
- Sterile lemma
- Pedicel
- Guard cells
- Trichomes
- Vascular

T0 Blade

- YES
- POSSIBLE
- Vascular
- Guard cells
- Trichomes
- Mesophyll

T0 Sheath

- YES
- POSSIBLE
- Collar
- Vascular
- Trichomes
- Guard cells
- Mesophyll

T1 Seed

- YES
- POSSIBLE
- Embryo
- Coleorhiza
- Scutellum
- Aleurone/Endo.
- Vasc. bundle

T1 Seedling

- YES
- POSSIBLE
- SHOOT
- ROOT
- ENDOSPERM
- Coleoptile
- Sheath tissue
- Blade tissue
- Leaf tip
- Collar
- Trichomes
- Guard cells
- S. vascular
- Seminal root
- Crown roots
- Lateral roots
- Root cap
- Root apex
- R. stele
- R. cortex/end.
- R. epidermis
- Constitutive

T1 Mature

T0 pattern verified:

T0 pattern verified plus:

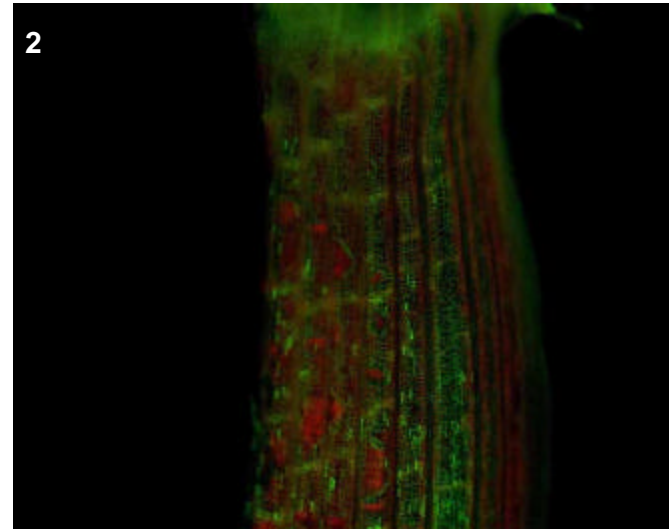
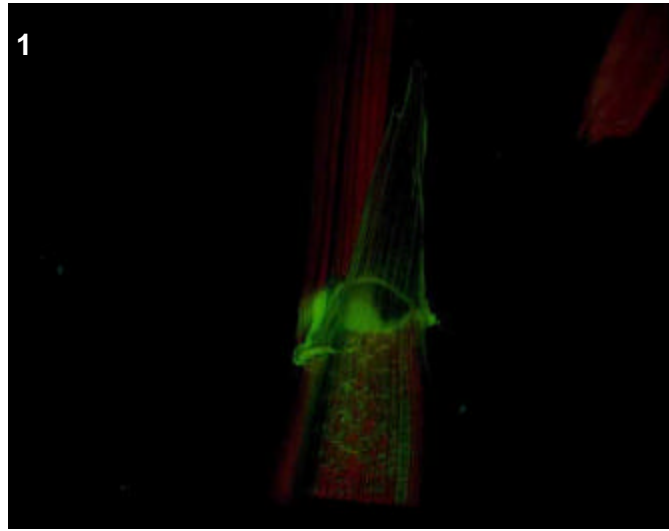
New pattern:

No GFP detected

T1 in greenhouse?
 YES, 2 GFP+ plants

Confocal?

Number T2 seed produced: 136



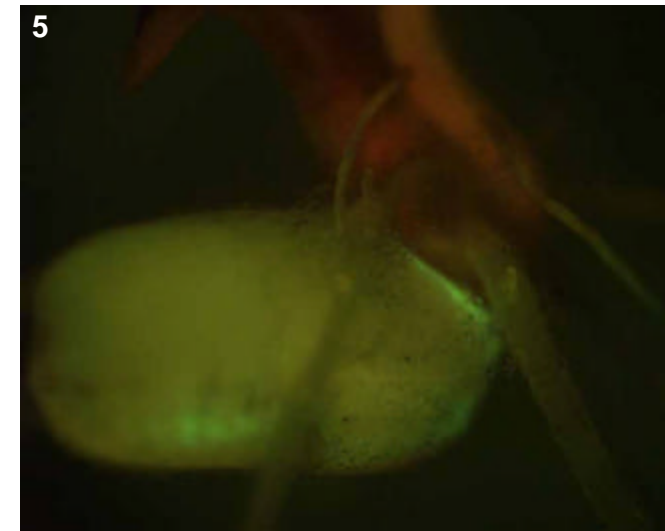
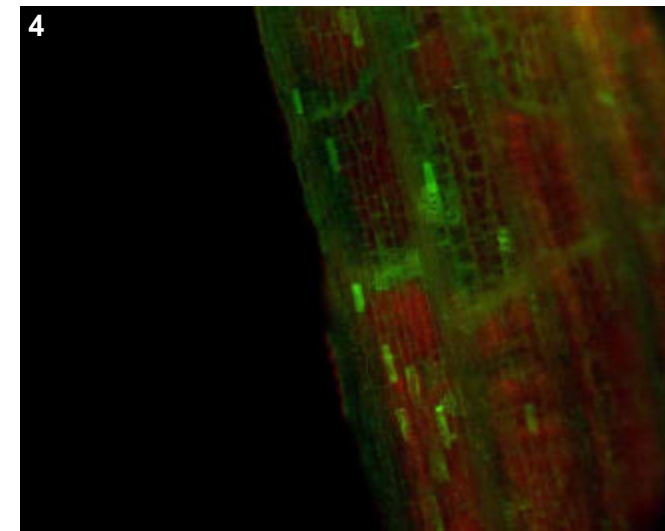
T0 comments

Strong expression in collar and vascular of sheath. Notice the the lit up cells in the sheath vascular, Could be a hypersensitive response to pathogen?

T1 seed comments

T1 seedling comments

Expression bright near the base of shoot.



Genotype: AQZ A03

Screened

- T0 mature plant
- T1 seed
- T1 seedling
- T1 mature plants

Expression

- None
- Bright
- Medium
- Weak
- Unsure

Pictures

T0 mature plant:

T1 seed/seedling: 1

T1 mature plant:

T0 Flower

- YES
- POSSIBLE
- Stamen: anther
- Stamen: filament
- Carpel: stigma
- Carpel: style
- Carpel: ovary
- Carpel: base
- Lemma/palea
- Lodicule
- Rachilla
- Sterile lemma
- Pedicel
- Guard cells
- Trichomes
- Vascular

T0 Blade

- YES
- POSSIBLE
- Vascular
- Guard cells
- Trichomes
- Mesophyll

T0 Sheath

- YES
- POSSIBLE
- Collar
- Vascular
- Trichomes
- Guard cells
- Mesophyll

T1 Seed

- YES
- POSSIBLE
- Embryo
- Coleorhiza
- Scutellum
- Aleurone/Endo.
- Vasc. bundle

T1 Seedling

- YES
- POSSIBLE
- SHOOT
- ROOT
- ENDOSPERM
- Coleoptile
- Sheath tissue
- Blade tissue
- Leaf tip
- Collar
- Trichomes
- Guard cells
- S. vascular
- Seminal root
- Crown roots
- Lateral roots
- Root cap
- Root apex
- R. stele
- R. cortex/end.
- R. epidermis
- Constitutive

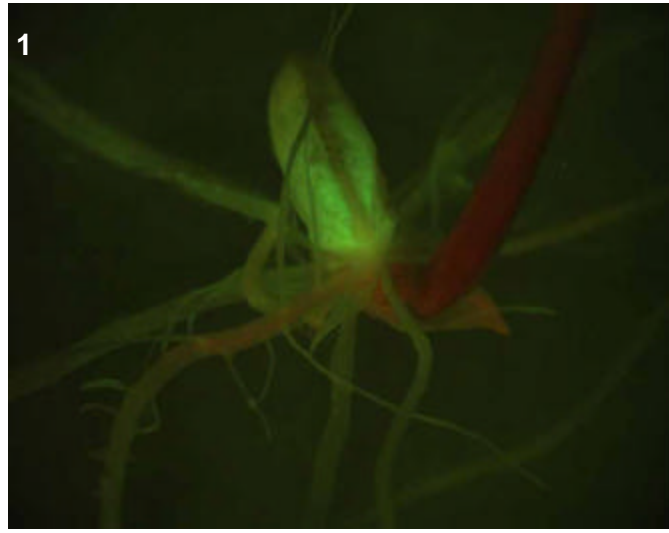
T1 Mature

- T0 pattern verified:
- T0 pattern verified plus:
- New pattern:
- No GFP detected

T1 in greenhouse?
YES, 2 GFP+ plants

Confocal?

Number T2 seed produced: 66



T0 comments

T1 seed comments

T1 seedling comments

Genotype: AQZ A06

Screened

- T0 mature plant
- T1 seed
- T1 seedling
- T1 mature plants

Expression

- None
- Bright
- Medium
- Weak
- Unsure

Pictures

T0 mature plant:

T1 seed/seedling: 1

T1 mature plant:

T0 Flower

- YES
- POSSIBLE
- Stamen: anther
- Stamen: filament
- Carpel: stigma
- Carpel: style
- Carpel: ovary
- Carpel: base
- Lemma/palea
- Lodicule
- Rachilla
- Sterile lemma
- Pedicel
- Guard cells
- Trichomes
- Vascular

T0 Blade

- YES
- POSSIBLE
- Vascular
- Guard cells
- Trichomes
- Mesophyll

T0 Sheath

- YES
- POSSIBLE
- Collar
- Vascular
- Trichomes
- Guard cells
- Mesophyll

T1 Seed

- YES
- POSSIBLE
- Embryo
- Coleorhiza
- Scutellum
- Aleurone/Endo.
- Vasc. bundle

T1 Seedling

- YES
- POSSIBLE
- SHOOT
- ROOT
- ENDOSPERM
- Coleoptile
- Sheath tissue
- Blade tissue
- Leaf tip
- Collar
- Trichomes
- Guard cells
- S. vascular
- Seminal root
- Crown roots
- Lateral roots
- Root cap
- Root apex
- R. stele
- R. cortex/end.
- R. epidermis
- Constitutive

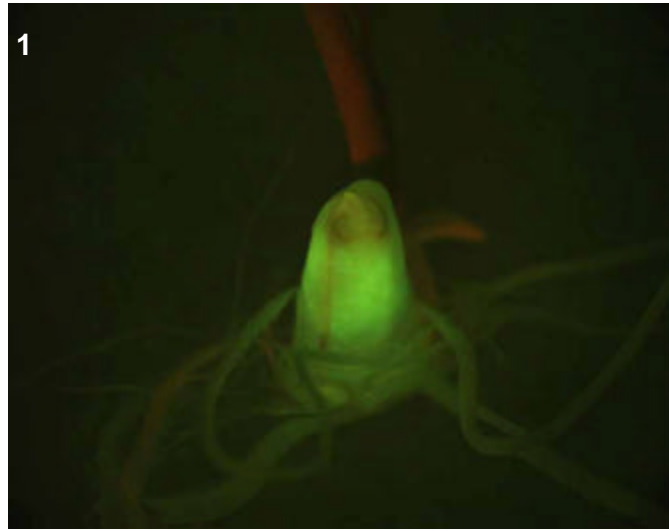
T1 Mature

- T0 pattern verified:
- T0 pattern verified plus:
- New pattern:
- No GFP detected

T1 in greenhouse?
YES, 2 GFP+ plants

Confocal?

Number T2 seed produced: 4



T0 comments

T1 seed comments

T1 seedling comments

Genotype: ARC E01

Screened

- T0 mature plant
- T1 seed
- T1 seedling
- T1 mature plants

Expression

- None
- Bright
- Medium
- Weak
- Unsure

Pictures

T0 mature plant:

T1 seed/seedling: 1

T1 mature plant:

T0 Flower

- YES
- POSSIBLE
- Stamen: anther
- Stamen: filament
- Carpel: stigma
- Carpel: style
- Carpel: ovary
- Carpel: base
- Lemma/palea
- Lodicule
- Rachilla
- Sterile lemma
- Pedicel
- Guard cells
- Trichomes
- Vascular

T0 Blade

- YES
- POSSIBLE
- Vascular
- Guard cells
- Trichomes
- Mesophyll

T0 Sheath

- YES
- POSSIBLE
- Collar
- Vascular
- Trichomes
- Guard cells
- Mesophyll

T1 Seed

- YES
- POSSIBLE
- Embryo
- Coleorhiza
- Scutellum
- Aleurone/Endo.
- Vasc. bundle

T1 Seedling

- YES
- POSSIBLE
- SHOOT
- ROOT
- ENDOSPERM
- Coleoptile
- Sheath tissue
- Blade tissue
- Leaf tip
- Collar
- Trichomes
- Guard cells
- S. vascular
- Seminal root
- Crown roots
- Lateral roots
- Root cap
- Root apex
- R. stele
- R. cortex/end.
- R. epidermis
- Constitutive

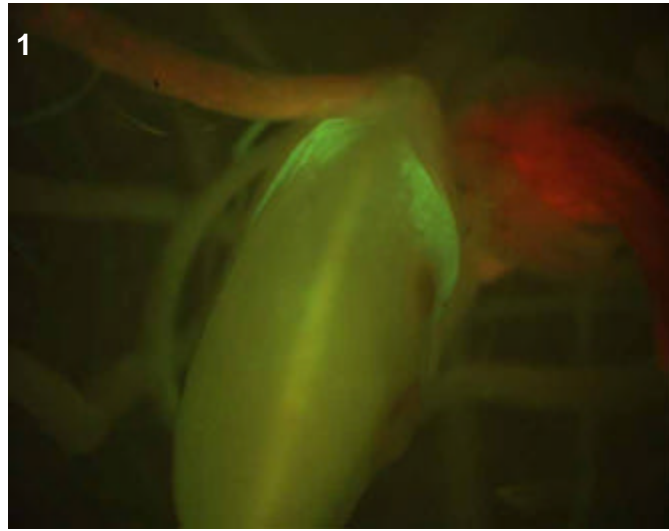
T1 Mature

- T0 pattern verified:
- T0 pattern verified plus:
- New pattern:
- No GFP detected

T1 in greenhouse?
YES, 3 GFP+ plants

Confocal?

Number T2 seed produced: 23



T0 comments

T1 seed comments

T1 seedling comments

Expression specific to the endosperm.

Genotype: ARE F10

Screened

- T0 mature plant
- T1 seed
- T1 seedling
- T1 mature plants

Expression

- None
- Bright
- Medium
- Weak
- Unsure

Pictures

T0 mature plant:

T1 seed/seedling: 1

T1 mature plant:

T0 Flower

- YES
- POSSIBLE
- Stamen: anther
- Stamen: filament
- Carpel: stigma
- Carpel: style
- Carpel: ovary
- Carpel: base
- Lemma/palea
- Lodicule
- Rachilla
- Sterile lemma
- Pedicel
- Guard cells
- Trichomes
- Vascular

T0 Blade

- YES
- POSSIBLE
- Vascular
- Guard cells
- Trichomes
- Mesophyll

T0 Sheath

- YES
- POSSIBLE
- Collar
- Vascular
- Trichomes
- Guard cells
- Mesophyll

T1 Seed

- YES
- POSSIBLE
- Embryo
- Coleorhiza
- Scutellum
- Aleurone/Endo.
- Vasc. bundle

T1 Seedling

- YES
- POSSIBLE
- SHOOT
- ROOT
- ENDOSPERM
- Coleoptile
- Sheath tissue
- Blade tissue
- Leaf tip
- Collar
- Trichomes
- Guard cells
- S. vascular
- Seminal root
- Crown roots
- Lateral roots
- Root cap
- Root apex
- R. stele
- R. cortex/end.
- R. epidermis
- Constitutive

T1 Mature

T0 pattern verified:

T0 pattern verified plus:

New pattern:

No GFP detected

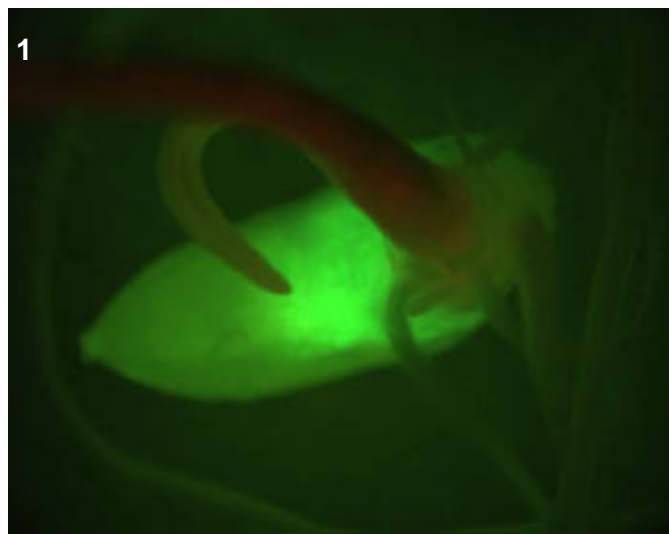
T1 in greenhouse?

YES, 1 GFP+ plant

Confocal?

Number T2 seed produced:

2



T0 comments

T1 seed comments

T1 seedling comments

Endosperm-specific line.

Genotype: ARF C02

Screened

- T0 mature plant
- T1 seed
- T1 seedling
- T1 mature plants

Expression

- None
- Bright
- Medium
- Weak
- Unsure

Pictures

T0 mature plant:

T1 seed/seedling: 1-2

T1 mature plant:

T0 Flower

- YES
- POSSIBLE
- Stamen: anther
- Stamen: filament
- Carpel: stigma
- Carpel: style
- Carpel: ovary
- Carpel: base
- Lemma/palea
- Lodicule
- Rachilla
- Sterile lemma
- Pedicel
- Guard cells
- Trichomes
- Vascular

T0 Blade

- YES
- POSSIBLE
- Vascular
- Guard cells
- Trichomes
- Mesophyll

T0 Sheath

- YES
- POSSIBLE
- Collar
- Vascular
- Trichomes
- Guard cells
- Mesophyll

T1 Seed

- YES
- POSSIBLE
- Embryo
- Coleorhiza
- Scutellum
- Aleurone/Endo.
- Vasc. bundle

T1 Seedling

- YES
- POSSIBLE
- SHOOT
- ROOT
- ENDOSPERM
- Coleoptile
- Sheath tissue
- Blade tissue
- Leaf tip
- Collar
- Trichomes
- Guard cells
- S. vascular
- Seminal root
- Crown roots
- Lateral roots
- Root cap
- Root apex
- R. stele
- R. cortex/end.
- R. epidermis
- Constitutive

T1 Mature

T0 pattern verified:

T0 pattern verified plus:

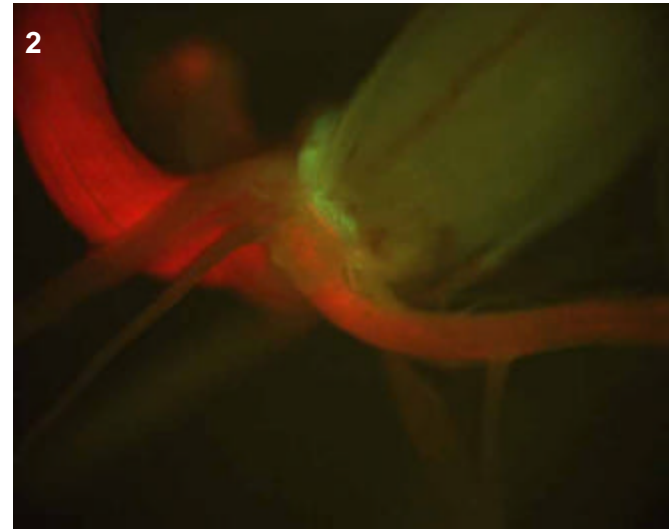
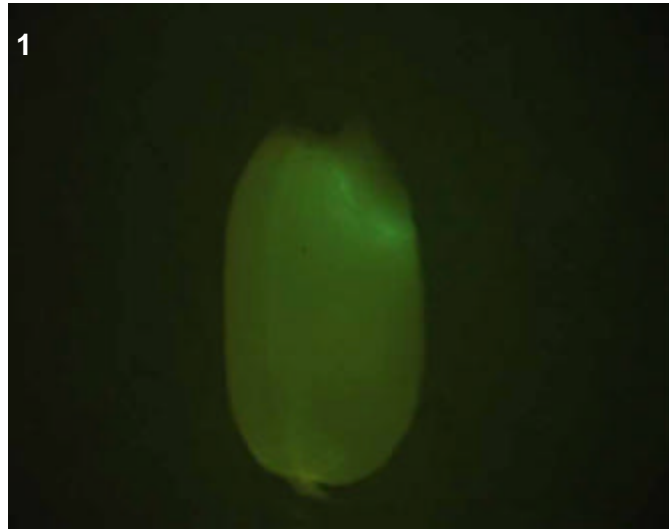
New pattern:

No GFP detected

T1 in greenhouse?
YES, 3 GFP+ plants

Confocal?

Number T2 seed produced: 8



T0 comments

T1 seed comments

About 3/5 seeds had expression, difficult to determine because very faint. Brightest one in pic 1.

T1 seedling comments

Expression in seedlings is only evident near the scutellum region of the digesting seed (pic 2).

Genotype: ARF F01

Screened

- T0 mature plant
- T1 seed
- T1 seedling
- T1 mature plants

Expression

- None
- Bright
- Medium
- Weak
- Unsure

Pictures

T0 mature plant:

T1 seed/seedling: 1

T1 mature plant:

T0 Flower

- YES
- POSSIBLE
- Stamen: anther
- Stamen: filament
- Carpel: stigma
- Carpel: style
- Carpel: ovary
- Carpel: base
- Lemma/palea
- Lodicule
- Rachilla
- Sterile lemma
- Pedicel
- Guard cells
- Trichomes
- Vascular

T0 Blade

- YES
- POSSIBLE
- Vascular
- Guard cells
- Trichomes
- Mesophyll

T0 Sheath

- YES
- POSSIBLE
- Collar
- Vascular
- Trichomes
- Guard cells
- Mesophyll

T1 Seed

- YES
- POSSIBLE
- Embryo
- Coleorhiza
- Scutellum
- Aleurone/Endo.
- Vasc. bundle

T1 Seedling

- YES
- POSSIBLE
- SHOOT
- ROOT
- ENDOSPERM
- Coleoptile
- Sheath tissue
- Blade tissue
- Leaf tip
- Collar
- Trichomes
- Guard cells
- S. vascular
- Seminal root
- Crown roots
- Lateral roots
- Root cap
- Root apex
- R. stele
- R. cortex/end.
- R. epidermis
- Constitutive

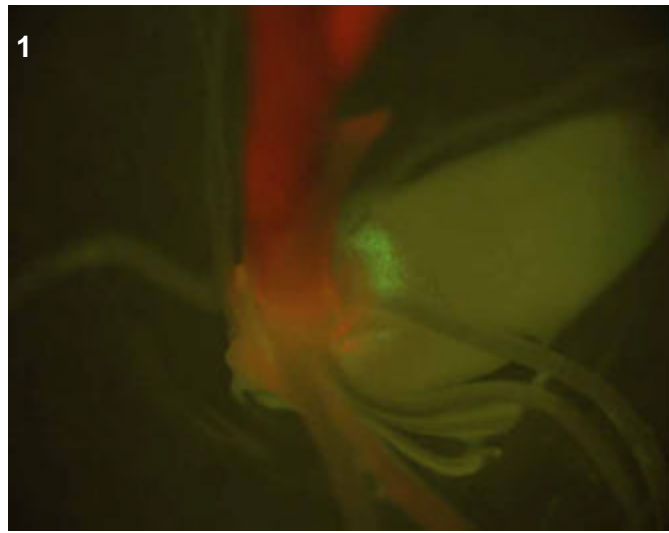
T1 Mature

- T0 pattern verified:
- T0 pattern verified plus:
- New pattern:
- No GFP detected

T1 in greenhouse?
YES, 3 GFP+ plants

Confocal?

Number T2 seed produced: 25



T0 comments

T1 seed comments

T1 seedling comments

Expression was observed only near the scutellum region of the digesting seed.

Genotype: ARH B09

Screened

- T0 mature plant
- T1 seed
- T1 seedling
- T1 mature plants

Expression

- None
- Bright
- Medium
- Weak
- Unsure

Pictures

T0 mature plant:

T1 seed/seedling: 1

T1 mature plant:

T0 Flower

- YES
- POSSIBLE
- Stamen: anther
- Stamen: filament
- Carpel: stigma
- Carpel: style
- Carpel: ovary
- Carpel: base
- Lemma/palea
- Lodicule
- Rachilla
- Sterile lemma
- Pedicel
- Guard cells
- Trichomes
- Vascular

T0 Blade

- YES
- POSSIBLE
- Vascular
- Guard cells
- Trichomes
- Mesophyll

T0 Sheath

- YES
- POSSIBLE
- Collar
- Vascular
- Trichomes
- Guard cells
- Mesophyll

T1 Seed

- YES
- POSSIBLE
- Embryo
- Coleorhiza
- Scutellum
- Aleurone/Endo.
- Vasc. bundle

T1 Seedling

- YES
- POSSIBLE
- SHOOT
- ROOT
- ENDOSPERM
- Coleoptile
- Sheath tissue
- Blade tissue
- Leaf tip
- Collar
- Trichomes
- Guard cells
- S. vascular
- Seminal root
- Crown roots
- Lateral roots
- Root cap
- Root apex
- R. stele
- R. cortex/end.
- R. epidermis
- Constitutive

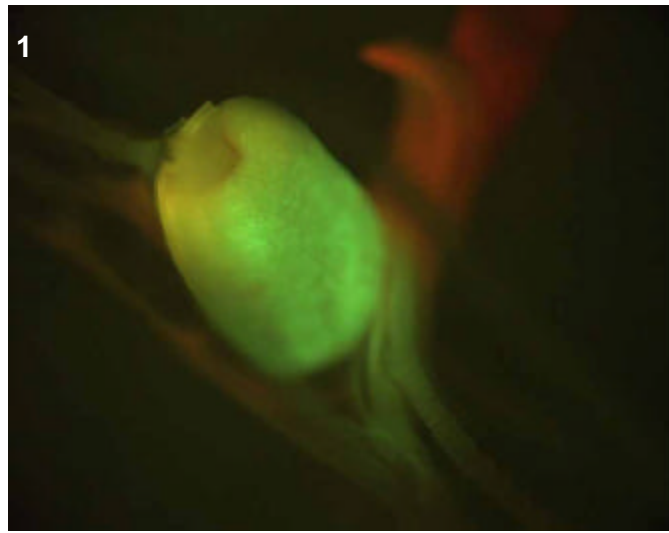
T1 Mature

- T0 pattern verified:
- T0 pattern verified plus:
- New pattern:
- No GFP detected

T1 in greenhouse?
YES, 2 GFP+ plants

Confocal?

Number T2 seed produced: 66



T0 comments

T1 seed comments

Bad germination of seeds, only 1/5 germinated.

T1 seedling comments

Genotype: ARI E01

Screened

- T0 mature plant
- T1 seed
- T1 seedling
- T1 mature plants

Expression

- None
- Bright
- Medium
- Weak
- Unsure

Pictures

T0 mature plant: 1-2
 T1 seed/seedling: 3
 T1 mature plant:

T0 Flower

- YES
- POSSIBLE
- Stamen: anther
- Stamen: filament
- Carpel: stigma
- Carpel: style
- Carpel: ovary
- Carpel: base
- Lemma/palea
- Lodicule
- Rachilla
- Sterile lemma
- Pedicel
- Guard cells
- Trichomes
- Vascular

T0 Blade

- YES
- POSSIBLE
- Vascular
- Guard cells
- Trichomes
- Mesophyll

T0 Sheath

- YES
- POSSIBLE
- Collar
- Vascular
- Trichomes
- Guard cells
- Mesophyll

T1 Seed

- YES
- POSSIBLE
- Embryo
- Coleorhiza
- Scutellum
- Aleurone/Endo.
- Vasc. bundle

T1 Seedling

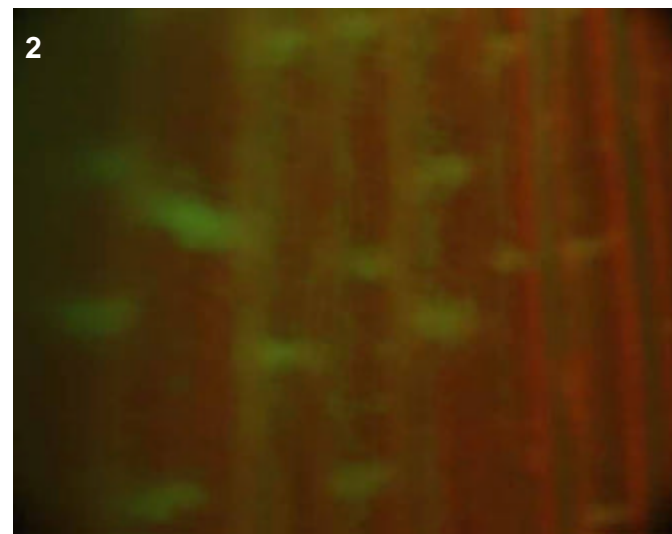
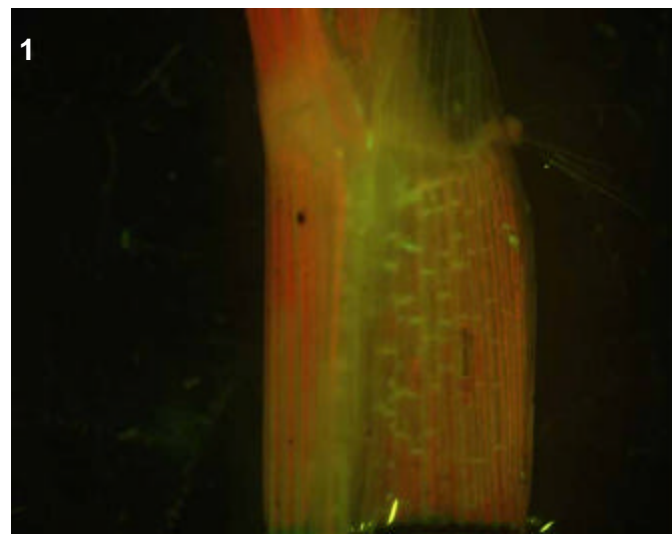
- YES
- POSSIBLE
- SHOOT
- ROOT
- ENDOSPERM
- Coleoptile
- Sheath tissue
- Blade tissue
- Leaf tip
- Collar
- Trichomes
- Guard cells
- S. vascular
- Seminal root
- Crown roots
- Lateral roots
- Root cap
- Root apex
- R. stele
- R. cortex/end.
- R. epidermis
- Constitutive

T1 Mature

- T0 pattern verified:
- T0 pattern verified plus:
- New pattern:
- No GFP detected

T1 in greenhouse?
 YES, 3 GFP+ plants **Confocal?**

Number T2 seed produced: 68



T0 comments

T1 seed comments

T1 seedling comments

Genotype: ARJ A10

Screened

- T0 mature plant
- T1 seed
- T1 seedling
- T1 mature plants

Expression

- None
- Bright
- Medium
- Weak
- Unsure

Pictures

T0 mature plant:

T1 seed/seedling: 1-2

T1 mature plant:

T0 Flower

- YES
- POSSIBLE
- Stamen: anther
- Stamen: filament
- Carpel: stigma
- Carpel: style
- Carpel: ovary
- Carpel: base
- Lemma/palea
- Lodicule
- Rachilla
- Sterile lemma
- Pedicel
- Guard cells
- Trichomes
- Vascular

T0 Blade

- YES
- POSSIBLE
- Vascular
- Guard cells
- Trichomes
- Mesophyll

T0 Sheath

- YES
- POSSIBLE
- Collar
- Vascular
- Trichomes
- Guard cells
- Mesophyll

T1 Seed

- YES
- POSSIBLE
- Embryo
- Coleorhiza
- Scutellum
- Aleurone/Endo.
- Vasc. bundle

T1 Seedling

- YES
- POSSIBLE
- SHOOT
- ROOT
- ENDOSPERM
- Coleoptile
- Sheath tissue
- Blade tissue
- Leaf tip
- Collar
- Trichomes
- Guard cells
- S. vascular
- Seminal root
- Crown roots
- Lateral roots
- Root cap
- Root apex
- R. stele
- R. cortex/end.
- R. epidermis
- Constitutive

T1 Mature

T0 pattern verified:

T0 pattern verified plus:

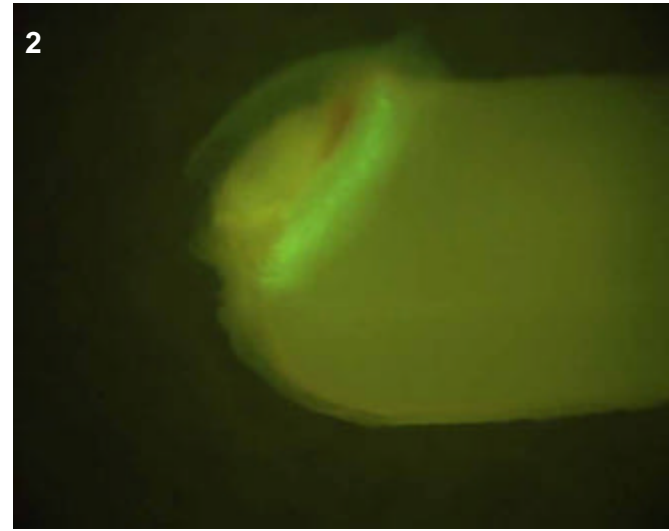
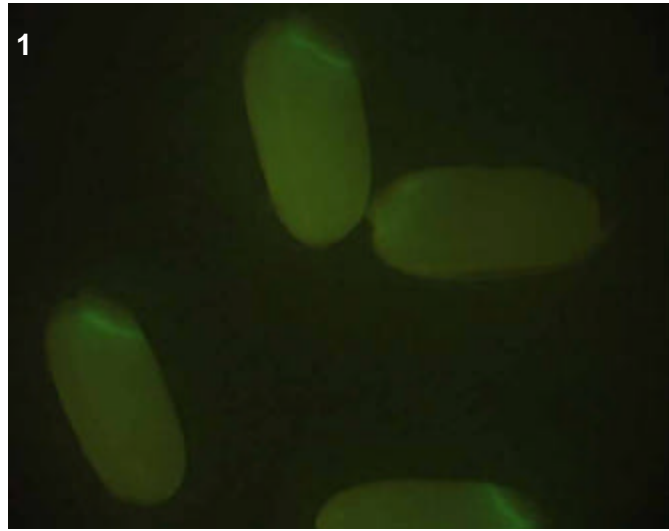
New pattern:

No GFP detected

T1 in greenhouse?

Confocal?

Number T2 seed produced:



T0 comments

T1 seed comments

4/5 seeds had medium expression in the scutellum.

T1 seedling comments

Very bad germination, nothing transferred to greenhouse because virtually no growth.

Genotype: ARK H04

Screened

- T0 mature plant
- T1 seed
- T1 seedling
- T1 mature plants

Expression

- None
- Bright
- Medium
- Weak
- Unsure

Pictures

T0 mature plant:

T1 seed/seedling: 1

T1 mature plant:

T0 Flower

- YES
- POSSIBLE
- Stamen: anther
- Stamen: filament
- Carpel: stigma
- Carpel: style
- Carpel: ovary
- Carpel: base
- Lemma/palea
- Lodicule
- Rachilla
- Sterile lemma
- Pedicel
- Guard cells
- Trichomes
- Vascular

T0 Blade

- YES
- POSSIBLE
- Vascular
- Guard cells
- Trichomes
- Mesophyll

T0 Sheath

- YES
- POSSIBLE
- Collar
- Vascular
- Trichomes
- Guard cells
- Mesophyll

T1 Seed

- YES
- POSSIBLE
- Embryo
- Coleorhiza
- Scutellum
- Aleurone/Endo.
- Vasc. bundle

T1 Seedling

- YES
- POSSIBLE
- SHOOT
- ROOT
- ENDOSPERM
- Coleoptile
- Sheath tissue
- Blade tissue
- Leaf tip
- Collar
- Trichomes
- Guard cells
- S. vascular
- Seminal root
- Crown roots
- Lateral roots
- Root cap
- Root apex
- R. stele
- R. cortex/end.
- R. epidermis
- Constitutive

T1 Mature

T0 pattern verified:

T0 pattern verified plus:

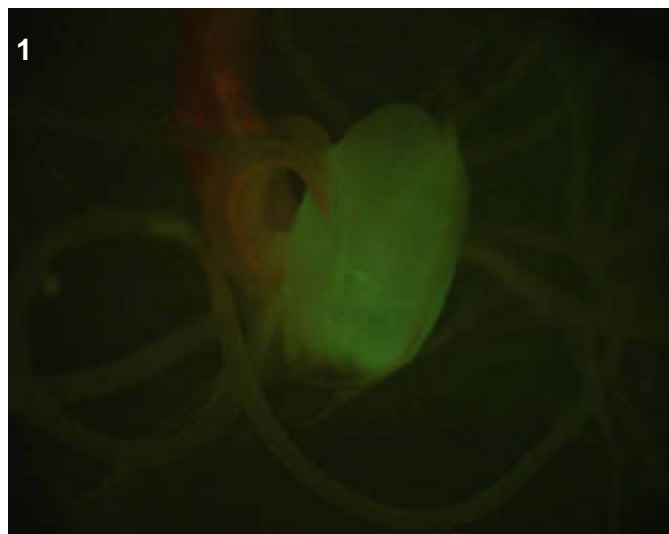
New pattern:

No GFP detected

T1 in greenhouse?
YES, 3 GFP+ plants

Confocal?

Number T2 seed produced: 76



T0 comments

T1 seed comments

T1 seedling comments

Genotype: ARL C08

Screened

- T0 mature plant
- T1 seed
- T1 seedling
- T1 mature plants

Expression

- None
- Bright
- Medium
- Weak
- Unsure

Pictures

T0 mature plant:

T1 seed/seedling: 1

T1 mature plant:

T0 Flower

- YES
- POSSIBLE
- Stamen: anther
- Stamen: filament
- Carpel: stigma
- Carpel: style
- Carpel: ovary
- Carpel: base
- Lemma/palea
- Lodicule
- Rachilla
- Sterile lemma
- Pedicel
- Guard cells
- Trichomes
- Vascular

T0 Blade

- YES
- POSSIBLE
- Vascular
- Guard cells
- Trichomes
- Mesophyll

T0 Sheath

- YES
- POSSIBLE
- Collar
- Vascular
- Trichomes
- Guard cells
- Mesophyll

T1 Seed

- YES
- POSSIBLE
- Embryo
- Coleorhiza
- Scutellum
- Aleurone/Endo.
- Vasc. bundle

T1 Seedling

- YES
- POSSIBLE
- SHOOT
- ROOT
- ENDOSPERM
- Coleoptile
- Sheath tissue
- Blade tissue
- Leaf tip
- Collar
- Trichomes
- Guard cells
- S. vascular
- Seminal root
- Crown roots
- Lateral roots
- Root cap
- Root apex
- R. stele
- R. cortex/end.
- R. epidermis
- Constitutive

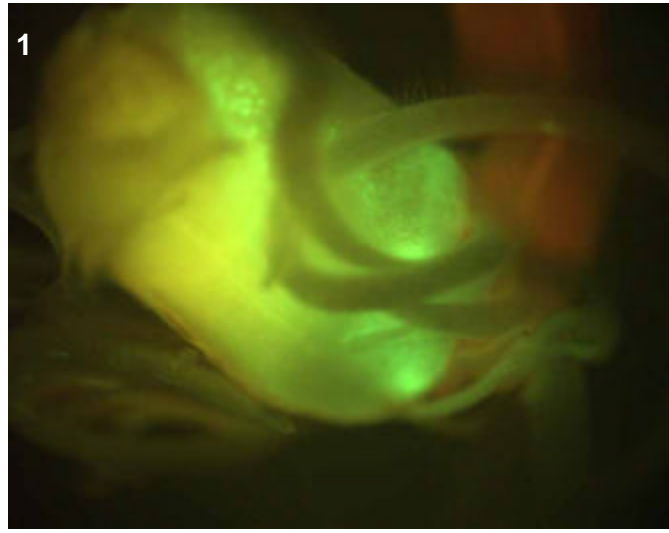
T1 Mature

- T0 pattern verified:
- T0 pattern verified plus:
- New pattern:
- No GFP detected

T1 in greenhouse?
YES, 2 GFP+ plants

Confocal?

Number T2 seed produced: 107



T0 comments

T1 seed comments

T1 seedling comments

Genotype: ARL G07

Screened

- T0 mature plant
- T1 seed
- T1 seedling
- T1 mature plants

Expression

- None
- Bright
- Medium
- Weak
- Unsure

Pictures

T0 mature plant:

T1 seed/seedling: 1

T1 mature plant:

T0 Flower

- YES
- POSSIBLE
- Stamen: anther
- Stamen: filament
- Carpel: stigma
- Carpel: style
- Carpel: ovary
- Carpel: base
- Lemma/palea
- Lodicule
- Rachilla
- Sterile lemma
- Pedicel
- Guard cells
- Trichomes
- Vascular

T0 Blade

- YES
- POSSIBLE
- Vascular
- Guard cells
- Trichomes
- Mesophyll

T0 Sheath

- YES
- POSSIBLE
- Collar
- Vascular
- Trichomes
- Guard cells
- Mesophyll

T1 Seed

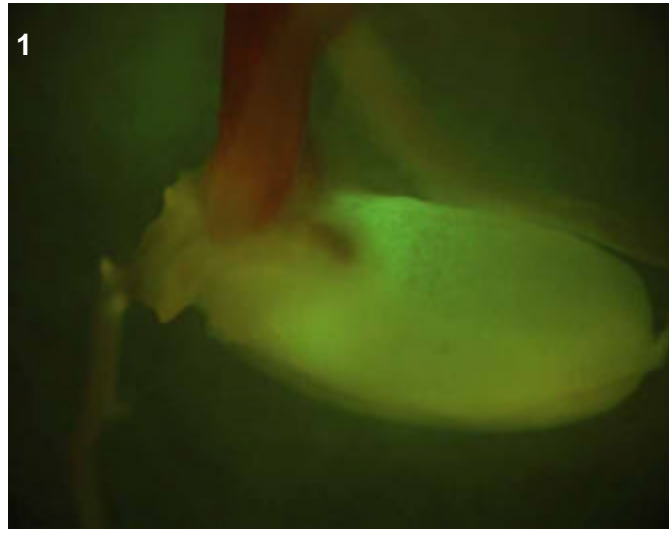
- YES
- POSSIBLE
- Embryo
- Coleorhiza
- Scutellum
- Aleurone/Endo.
- Vasc. bundle

T1 Seedling

- YES
- POSSIBLE
- SHOOT
- ROOT
- ENDOSPERM
- Coleoptile
- Sheath tissue
- Blade tissue
- Leaf tip
- Collar
- Trichomes
- Guard cells
- S. vascular
- Seminal root
- Crown roots
- Lateral roots
- Root cap
- Root apex
- R. stele
- R. cortex/end.
- R. epidermis
- Constitutive

T1 Mature

- T0 pattern verified:
- T0 pattern verified plus:
- New pattern:
- No GFP detected
- T1 in greenhouse?
- Confocal?
- Number T2 seed produced:



T0 comments

T1 seed comments

T1 seedling comments

Genotype: ARL G12

Screened

- T0 mature plant
- T1 seed
- T1 seedling
- T1 mature plants

Expression

- None
- Bright
- Medium
- Weak
- Unsure

Pictures

T0 mature plant:

T1 seed/seedling: 1-2

T1 mature plant:

T0 Flower

- YES
- POSSIBLE
- Stamen: anther
- Stamen: filament
- Carpel: stigma
- Carpel: style
- Carpel: ovary
- Carpel: base
- Lemma/palea
- Lodicule
- Rachilla
- Sterile lemma
- Pedicel
- Guard cells
- Trichomes
- Vascular

T0 Blade

- YES
- POSSIBLE
- Vascular
- Guard cells
- Trichomes
- Mesophyll

T0 Sheath

- YES
- POSSIBLE
- Collar
- Vascular
- Trichomes
- Guard cells
- Mesophyll

T1 Seed

- YES
- POSSIBLE
- Embryo
- Coleorhiza
- Scutellum
- Aleurone/Endo.
- Vasc. bundle

T1 Seedling

- YES
- POSSIBLE
- SHOOT
- ROOT
- ENDOSPERM
- Coleoptile
- Sheath tissue
- Blade tissue
- Leaf tip
- Collar
- Trichomes
- Guard cells
- S. vascular
- Seminal root
- Crown roots
- Lateral roots
- Root cap
- Root apex
- R. stele
- R. cortex/end.
- R. epidermis
- Constitutive

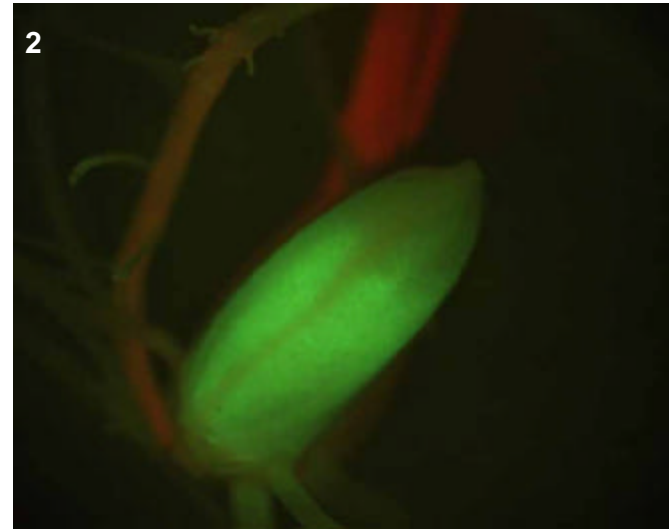
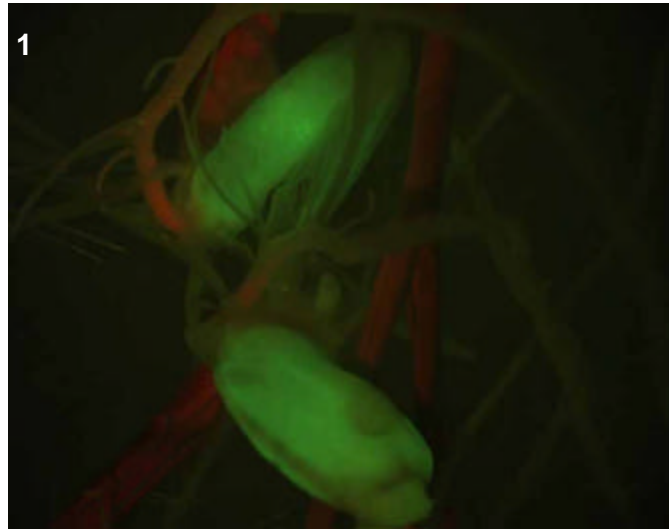
T1 Mature

- T0 pattern verified:
- T0 pattern verified plus:
- New pattern:
- No GFP detected

T1 in greenhouse?
 YES, 3 GFP+ plants

Confocal?

Number T2 seed produced: 38



T0 comments

T1 seed comments

T1 seedling comments

Genotype: ARM F05

Screened

- T0 mature plant
- T1 seed
- T1 seedling
- T1 mature plants

Expression

- None
- Bright
- Medium
- Weak
- Unsure

Pictures

T0 mature plant:

T1 seed/seedling: 1

T1 mature plant:

T0 Flower

- YES
- POSSIBLE
- Stamen: anther
- Stamen: filament
- Carpel: stigma
- Carpel: style
- Carpel: ovary
- Carpel: base
- Lemma/palea
- Lodicule
- Rachilla
- Sterile lemma
- Pedicel
- Guard cells
- Trichomes
- Vascular

T0 Blade

- YES
- POSSIBLE
- Vascular
- Guard cells
- Trichomes
- Mesophyll

T0 Sheath

- YES
- POSSIBLE
- Collar
- Vascular
- Trichomes
- Guard cells
- Mesophyll

T1 Seed

- YES
- POSSIBLE
- Embryo
- Coleorhiza
- Scutellum
- Aleurone/Endo.
- Vasc. bundle

T1 Seedling

- YES
- POSSIBLE
- SHOOT
- ROOT
- ENDOSPERM
- Coleoptile
- Sheath tissue
- Blade tissue
- Leaf tip
- Collar
- Trichomes
- Guard cells
- S. vascular
- Seminal root
- Crown roots
- Lateral roots
- Root cap
- Root apex
- R. stele
- R. cortex/end.
- R. epidermis
- Constitutive

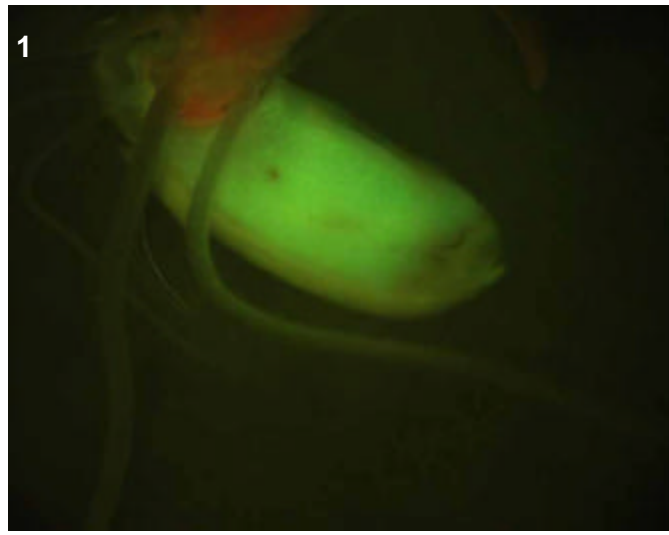
T1 Mature

- T0 pattern verified:
- T0 pattern verified plus:
- New pattern:
- No GFP detected

T1 in greenhouse?
 YES, 2 GFP+ plants

Confocal?

Number T2 seed produced: 32



T0 comments

T1 seed comments

T1 seedling comments

Genotype: ARN B10

Screened

- T0 mature plant
- T1 seed
- T1 seedling
- T1 mature plants

Expression

- None
- Bright
- Medium
- Weak
- Unsure

Pictures

T0 mature plant:

T1 seed/seedling: 1

T1 mature plant:

T0 Flower

- YES
- POSSIBLE
- Stamen: anther
- Stamen: filament
- Carpel: stigma
- Carpel: style
- Carpel: ovary
- Carpel: base
- Lemma/palea
- Lodicule
- Rachilla
- Sterile lemma
- Pedicel
- Guard cells
- Trichomes
- Vascular

T0 Blade

- YES
- POSSIBLE
- Vascular
- Guard cells
- Trichomes
- Mesophyll

T0 Sheath

- YES
- POSSIBLE
- Collar
- Vascular
- Trichomes
- Guard cells
- Mesophyll

T1 Seed

- YES
- POSSIBLE
- Embryo
- Coleorhiza
- Scutellum
- Aleurone/Endo.
- Vasc. bundle

T1 Seedling

- YES
- POSSIBLE
- SHOOT
- ROOT
- ENDOSPERM
- Coleoptile
- Sheath tissue
- Blade tissue
- Leaf tip
- Collar
- Trichomes
- Guard cells
- S. vascular
- Seminal root
- Crown roots
- Lateral roots
- Root cap
- Root apex
- R. stele
- R. cortex/end.
- R. epidermis
- Constitutive

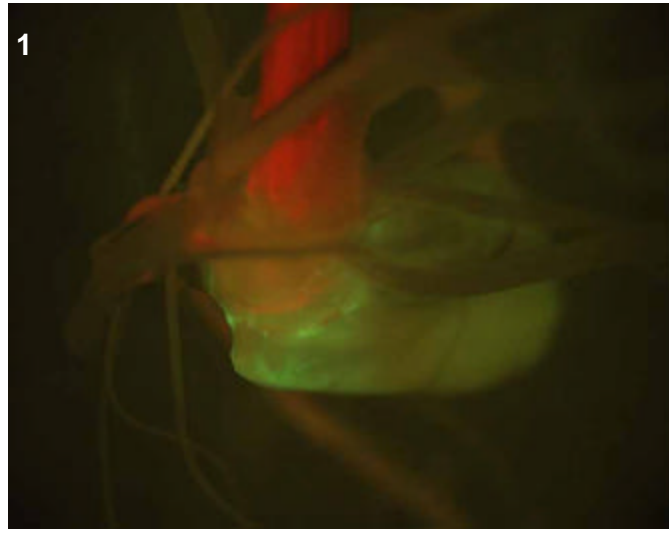
T1 Mature

- T0 pattern verified:
- T0 pattern verified plus:
- New pattern:
- No GFP detected

T1 in greenhouse?
YES, 3 GFP+ plants

Confocal?

Number T2 seed produced: 42



T0 comments

T1 seed comments

T1 seedling comments

Genotype: ARN C09

Screened

- T0 mature plant
- T1 seed
- T1 seedling
- T1 mature plants

Expression

- None
- Bright
- Medium
- Weak
- Unsure

Pictures

T0 mature plant:

T1 seed/seedling:

T1 mature plant:

T0 Flower

- YES
- POSSIBLE
- Stamen: anther
- Stamen: filament
- Carpel: stigma
- Carpel: style
- Carpel: ovary
- Carpel: base
- Lemma/palea
- Lodicule
- Rachilla
- Sterile lemma
- Pedicel
- Guard cells
- Trichomes
- Vascular

T0 Blade

- YES
- POSSIBLE
- Vascular
- Guard cells
- Trichomes
- Mesophyll

T0 Sheath

- YES
- POSSIBLE
- Collar
- Vascular
- Trichomes
- Guard cells
- Mesophyll

T1 Seed

- YES
- POSSIBLE
- Embryo
- Coleorhiza
- Scutellum
- Aleurone/Endo.
- Vasc. bundle

T1 Seedling

- YES
- POSSIBLE
- SHOOT
- ROOT
- ENDOSPERM
- Coleoptile
- Sheath tissue
- Blade tissue
- Leaf tip
- Collar
- Trichomes
- Guard cells
- S. vascular
- Seminal root
- Crown roots
- Lateral roots
- Root cap
- Root apex
- R. stele
- R. cortex/end.
- R. epidermis
- Constitutive

T1 Mature

- T0 pattern verified:
- T0 pattern verified plus:
- New pattern:
- No GFP detected

T1 in greenhouse?
YES, 3 GFP+ plants

Confocal?

Number T2 seed produced: 20

T0 comments

T1 seed comments

T1 seedling comments

Genotype: ARO A10

Screened

- T0 mature plant
- T1 seed
- T1 seedling
- T1 mature plants

Expression

- None
- Bright
- Medium
- Weak
- Unsure

Pictures

T0 mature plant:

T1 seed/seedling: 1-2

T1 mature plant:

T0 Flower

- YES
- POSSIBLE
- Stamen: anther
- Stamen: filament
- Carpel: stigma
- Carpel: style
- Carpel: ovary
- Carpel: base
- Lemma/palea
- Lodicule
- Rachilla
- Sterile lemma
- Pedicel
- Guard cells
- Trichomes
- Vascular

T0 Blade

- YES
- POSSIBLE
- Vascular
- Guard cells
- Trichomes
- Mesophyll

T0 Sheath

- YES
- POSSIBLE
- Collar
- Vascular
- Trichomes
- Guard cells
- Mesophyll

T1 Seed

- YES
- POSSIBLE
- Embryo
- Coleorhiza
- Scutellum
- Aleurone/Endo.
- Vasc. bundle

T1 Seedling

- YES
- POSSIBLE
- SHOOT
- ROOT
- ENDOSPERM
- Coleoptile
- Sheath tissue
- Blade tissue
- Leaf tip
- Collar
- Trichomes
- Guard cells
- S. vascular
- Seminal root
- Crown roots
- Lateral roots
- Root cap
- Root apex
- R. stele
- R. cortex/end.
- R. epidermis
- Constitutive

T1 Mature

T0 pattern verified:

T0 pattern verified plus:

New pattern:

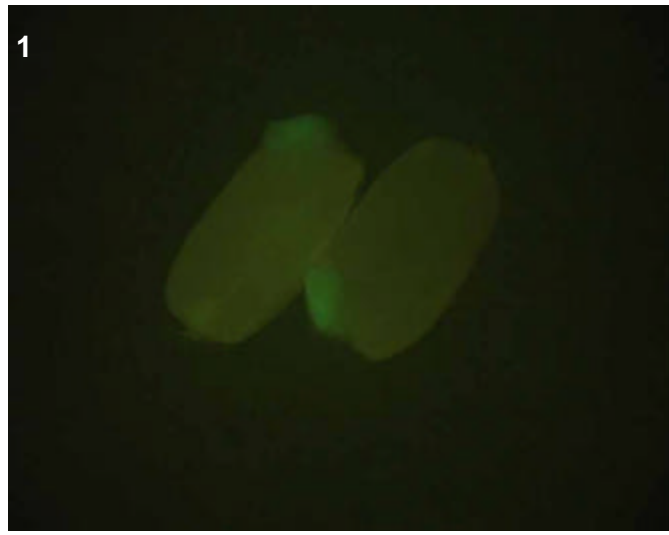
No GFP detected

T1 in greenhouse?
YES, 2 GFP+ plants

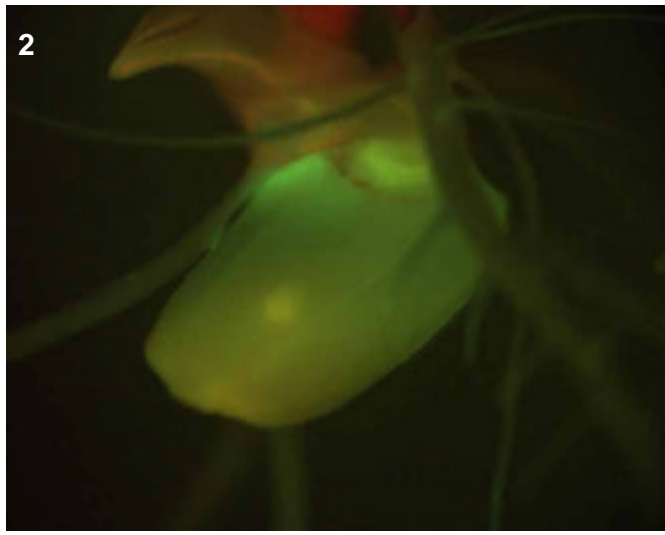
Confocal?

Number T2 seed produced: 65

1



2



T0 comments

T1 seed comments

3/5 seeds had bright expression.

T1 seedling comments

Genotype: ARO C09

Screened

- T0 mature plant
- T1 seed
- T1 seedling
- T1 mature plants

Expression

- None
- Bright
- Medium
- Weak
- Unsure

Pictures

T0 mature plant: 1-2
 T1 seed/seedling: 3-4
 T1 mature plant:

T0 Flower

- YES
- POSSIBLE
- Stamen: anther
- Stamen: filament
- Carpel: stigma
- Carpel: style
- Carpel: ovary
- Carpel: base
- Lemma/palea
- Lodicule
- Rachilla
- Sterile lemma
- Pedicel
- Guard cells
- Trichomes
- Vascular

T0 Blade

- YES
- POSSIBLE
- Vascular
- Guard cells
- Trichomes
- Mesophyll

T0 Sheath

- YES
- POSSIBLE
- Collar
- Vascular
- Trichomes
- Guard cells
- Mesophyll

T1 Seed

- YES
- POSSIBLE
- Embryo
- Coleorhiza
- Scutellum
- Aleurone/Endo.
- Vasc. bundle

T1 Seedling

- YES
- POSSIBLE
- SHOOT
- ROOT
- ENDOSPERM
- Coleoptile
- Sheath tissue
- Blade tissue
- Leaf tip
- Collar
- Trichomes
- Guard cells
- S. vascular
- Seminal root
- Crown roots
- Lateral roots
- Root cap
- Root apex
- R. stele
- R. cortex/end.
- R. epidermis
- Constitutive

T1 Mature

T0 pattern verified:

T0 pattern verified plus:

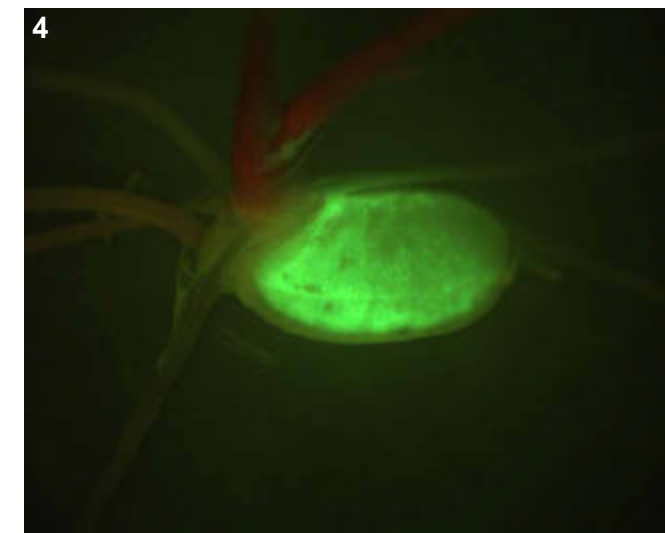
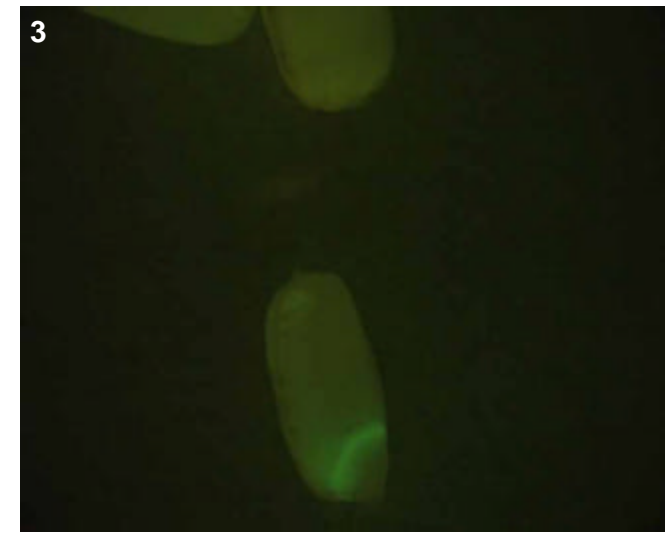
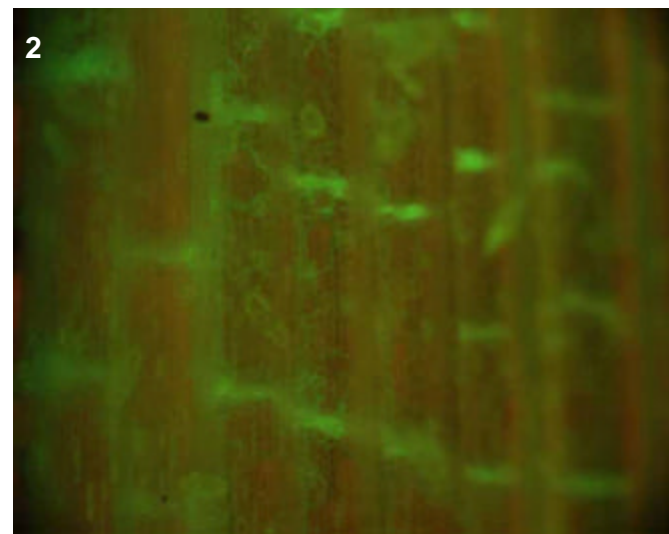
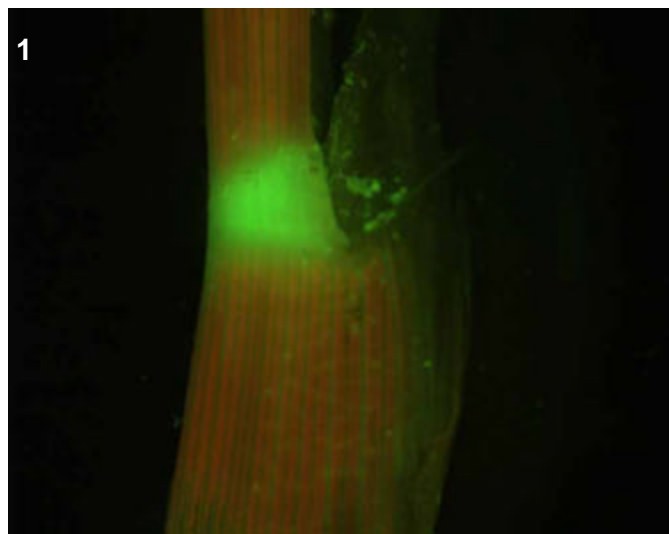
New pattern:

No GFP detected

T1 in greenhouse?
 YES, 3 GFP+ plants

Confocal?

Number T2 seed produced: 28



T0 comments

Flowers were too old to be analyzed.

T1 seed comments

4/5 seeds had bright scutellum expression (pic 3).

T1 seedling comments

Extremely bright expression in the entire endosperm one week post-germination (pic 4).

Genotype: ARO H11

Screened

- T0 mature plant
- T1 seed
- T1 seedling
- T1 mature plants

Expression

- None
- Bright
- Medium
- Weak
- Unsure

Pictures

T0 mature plant:

T1 seed/seedling: 1

T1 mature plant:

T0 Flower

- YES
- POSSIBLE
- Stamen: anther
- Stamen: filament
- Carpel: stigma
- Carpel: style
- Carpel: ovary
- Carpel: base
- Lemma/palea
- Lodicule
- Rachilla
- Sterile lemma
- Pedicel
- Guard cells
- Trichomes
- Vascular

T0 Blade

- YES
- POSSIBLE
- Vascular
- Guard cells
- Trichomes
- Mesophyll

T0 Sheath

- YES
- POSSIBLE
- Collar
- Vascular
- Trichomes
- Guard cells
- Mesophyll

T1 Seed

- YES
- POSSIBLE
- Embryo
- Coleorhiza
- Scutellum
- Aleurone/Endo.
- Vasc. bundle

T1 Seedling

- YES
- POSSIBLE
- SHOOT
- ROOT
- ENDOSPERM
- Coleoptile
- Sheath tissue
- Blade tissue
- Leaf tip
- Collar
- Trichomes
- Guard cells
- S. vascular
- Seminal root
- Crown roots
- Lateral roots
- Root cap
- Root apex
- R. stele
- R. cortex/end.
- R. epidermis
- Constitutive

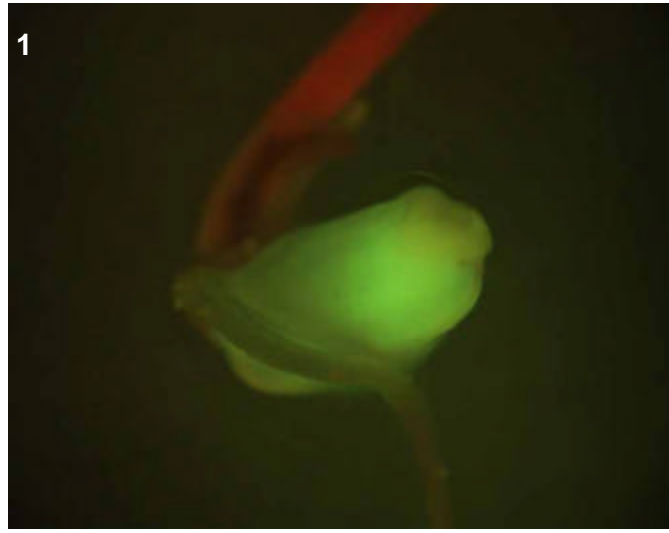
T1 Mature

- T0 pattern verified:
- T0 pattern verified plus:
- New pattern:
- No GFP detected

T1 in greenhouse?
YES, 2 GFP+ plants

Confocal?

Number T2 seed produced: 51



T0 comments

T1 seed comments

T1 seedling comments

Genotype: ARP F01

Screened

- T0 mature plant
- T1 seed
- T1 seedling
- T1 mature plants

Expression

- None
- Bright
- Medium
- Weak
- Unsure

Pictures

T0 mature plant:

T1 seed/seedling: 1-2

T1 mature plant:

T0 Flower

- YES
- POSSIBLE
- Stamen: anther
- Stamen: filament
- Carpel: stigma
- Carpel: style
- Carpel: ovary
- Carpel: base
- Lemma/palea
- Lodicule
- Rachilla
- Sterile lemma
- Pedicel
- Guard cells
- Trichomes
- Vascular

T0 Blade

- YES
- POSSIBLE
- Vascular
- Guard cells
- Trichomes
- Mesophyll

T0 Sheath

- YES
- POSSIBLE
- Collar
- Vascular
- Trichomes
- Guard cells
- Mesophyll

T1 Seed

- YES
- POSSIBLE
- Embryo
- Coleorhiza
- Scutellum
- Aleurone/Endo.
- Vasc. bundle

T1 Seedling

- YES
- POSSIBLE
- SHOOT
- ROOT
- ENDOSPERM
- Coleoptile
- Sheath tissue
- Blade tissue
- Leaf tip
- Collar
- Trichomes
- Guard cells
- S. vascular
- Seminal root
- Crown roots
- Lateral roots
- Root cap
- Root apex
- R. stele
- R. cortex/end.
- R. epidermis
- Constitutive

T1 Mature

T0 pattern verified:

T0 pattern verified plus:

New pattern:

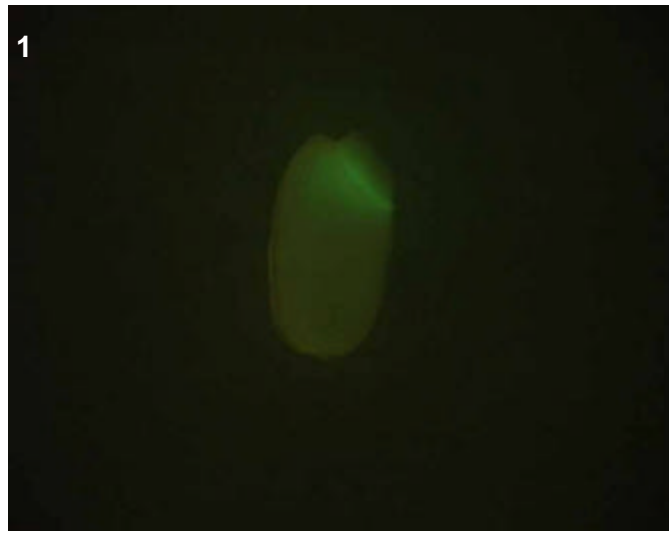
No GFP detected

T1 in greenhouse?
YES, 2 GFP+ plants

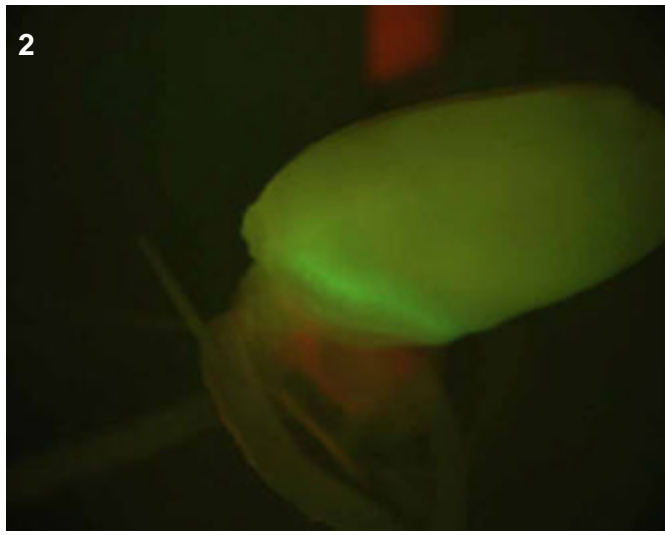
Confocal?

Number T2 seed produced: 84

1



2



T0 comments

tetraploid

T1 seed comments

2/5 seeds had expression.

T1 seedling comments

Medium expression specific to the scutellum region of the digesting seed (pic 2).

Genotype: ARQ A05

Screened

- T0 mature plant
- T1 seed
- T1 seedling
- T1 mature plants

Expression

- None
- Bright
- Medium
- Weak
- Unsure

Pictures

T0 mature plant:

T1 seed/seedling: 1

T1 mature plant:

T0 Flower

- YES
- POSSIBLE
- Stamen: anther
- Stamen: filament
- Carpel: stigma
- Carpel: style
- Carpel: ovary
- Carpel: base
- Lemma/palea
- Lodicule
- Rachilla
- Sterile lemma
- Pedicel
- Guard cells
- Trichomes
- Vascular

T0 Blade

- YES
- POSSIBLE
- Vascular
- Guard cells
- Trichomes
- Mesophyll

T0 Sheath

- YES
- POSSIBLE
- Collar
- Vascular
- Trichomes
- Guard cells
- Mesophyll

T1 Seed

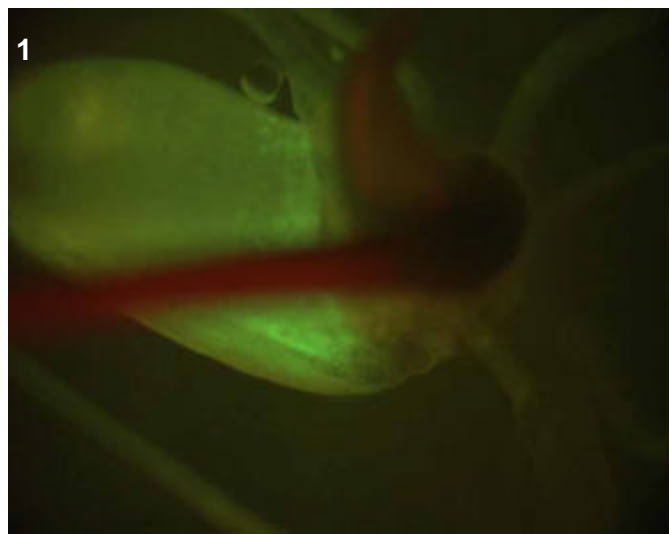
- YES
- POSSIBLE
- Embryo
- Coleorhiza
- Scutellum
- Aleurone/Endo.
- Vasc. bundle

T1 Seedling

- YES
- POSSIBLE
- SHOOT
- ROOT
- ENDOSPERM
- Coleoptile
- Sheath tissue
- Blade tissue
- Leaf tip
- Collar
- Trichomes
- Guard cells
- S. vascular
- Seminal root
- Crown roots
- Lateral roots
- Root cap
- Root apex
- R. stele
- R. cortex/end.
- R. epidermis
- Constitutive

T1 Mature

- T0 pattern verified:
- T0 pattern verified plus:
- New pattern:
- No GFP detected
- T1 in greenhouse?
- Confocal?
- Number T2 seed produced:



T0 comments

T1 seed comments

T1 seedling comments

Genotype: ARQ H01

Screened

- T0 mature plant
- T1 seed
- T1 seedling
- T1 mature plants

Expression

- None
- Bright
- Medium
- Weak
- Unsure

Pictures

T0 mature plant:

T1 seed/seedling: 1

T1 mature plant:

T0 Flower

- YES
- POSSIBLE
- Stamen: anther
- Stamen: filament
- Carpel: stigma
- Carpel: style
- Carpel: ovary
- Carpel: base
- Lemma/palea
- Lodicule
- Rachilla
- Sterile lemma
- Pedicel
- Guard cells
- Trichomes
- Vascular

T0 Blade

- YES
- POSSIBLE
- Vascular
- Guard cells
- Trichomes
- Mesophyll

T0 Sheath

- YES
- POSSIBLE
- Collar
- Vascular
- Trichomes
- Guard cells
- Mesophyll

T1 Seed

- YES
- POSSIBLE
- Embryo
- Coleorhiza
- Scutellum
- Aleurone/Endo.
- Vasc. bundle

T1 Seedling

- YES
- POSSIBLE
- SHOOT
- ROOT
- ENDOSPERM
- Coleoptile
- Sheath tissue
- Blade tissue
- Leaf tip
- Collar
- Trichomes
- Guard cells
- S. vascular
- Seminal root
- Crown roots
- Lateral roots
- Root cap
- Root apex
- R. stele
- R. cortex/end.
- R. epidermis
- Constitutive

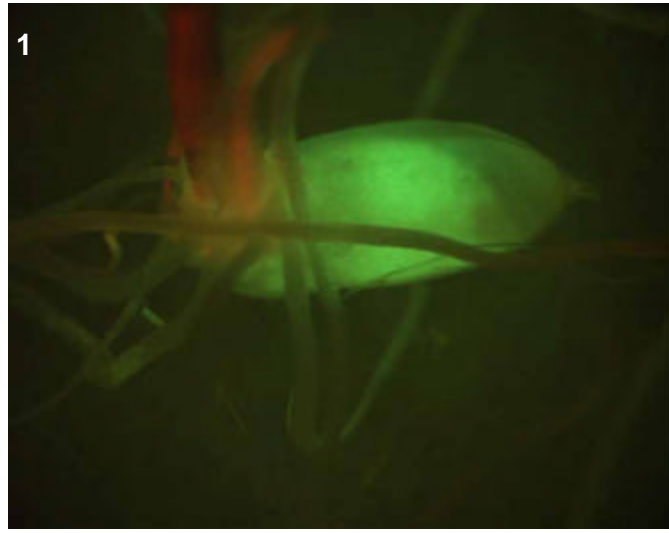
T1 Mature

- T0 pattern verified:
- T0 pattern verified plus:
- New pattern:
- No GFP detected

T1 in greenhouse?
YES, 2 GFP+ plants

Confocal?

Number T2 seed produced: 56



T0 comments

T1 seed comments

There may have been very faint expression in the aleurone/endosperm layer, not sure.

T1 seedling comments

Genotype: ARR G07

Screened

- T0 mature plant
- T1 seed
- T1 seedling
- T1 mature plants

Expression

- None
- Bright
- Medium
- Weak
- Unsure

Pictures

T0 mature plant:

T1 seed/seedling: 1

T1 mature plant:

T0 Flower

- YES
- POSSIBLE
- Stamen: anther
- Stamen: filament
- Carpel: stigma
- Carpel: style
- Carpel: ovary
- Carpel: base
- Lemma/palea
- Lodicule
- Rachilla
- Sterile lemma
- Pedicel
- Guard cells
- Trichomes
- Vascular

T0 Blade

- YES
- POSSIBLE
- Vascular
- Guard cells
- Trichomes
- Mesophyll

T0 Sheath

- YES
- POSSIBLE
- Collar
- Vascular
- Trichomes
- Guard cells
- Mesophyll

T1 Seed

- YES
- POSSIBLE
- Embryo
- Coleorhiza
- Scutellum
- Aleurone/Endo.
- Vasc. bundle

T1 Seedling

- YES
- POSSIBLE
- SHOOT
- ROOT
- ENDOSPERM
- Coleoptile
- Sheath tissue
- Blade tissue
- Leaf tip
- Collar
- Trichomes
- Guard cells
- S. vascular
- Seminal root
- Crown roots
- Lateral roots
- Root cap
- Root apex
- R. stele
- R. cortex/end.
- R. epidermis
- Constitutive

T1 Mature

T0 pattern verified:

T0 pattern verified plus:

New pattern:

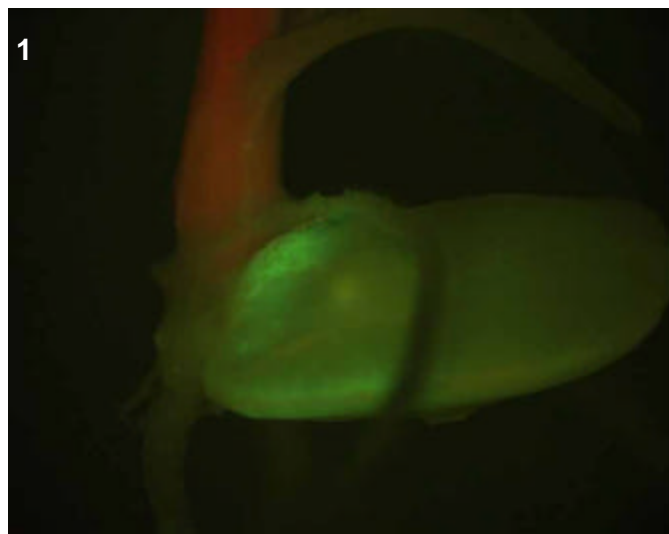
No GFP detected

T1 in greenhouse?

YES, 2 GFP+ plants

Confocal?

Number T2 seed produced: 89



T0 comments

T1 seed comments

T1 seedling comments

Genotype: ARS F03

Screened

- T0 mature plant
- T1 seed
- T1 seedling
- T1 mature plants

Expression

- None
- Bright
- Medium
- Weak
- Unsure

Pictures

T0 mature plant:

T1 seed/seedling: 1

T1 mature plant:

T0 Flower

- YES
- POSSIBLE
- Stamen: anther
- Stamen: filament
- Carpel: stigma
- Carpel: style
- Carpel: ovary
- Carpel: base
- Lemma/palea
- Lodicule
- Rachilla
- Sterile lemma
- Pedicel
- Guard cells
- Trichomes
- Vascular

T0 Blade

- YES
- POSSIBLE
- Vascular
- Guard cells
- Trichomes
- Mesophyll

T0 Sheath

- YES
- POSSIBLE
- Collar
- Vascular
- Trichomes
- Guard cells
- Mesophyll

T1 Seed

- YES
- POSSIBLE
- Embryo
- Coleorhiza
- Scutellum
- Aleurone/Endo.
- Vasc. bundle

T1 Seedling

- YES
- POSSIBLE
- SHOOT
- ROOT
- ENDOSPERM
- Coleoptile
- Sheath tissue
- Blade tissue
- Leaf tip
- Collar
- Trichomes
- Guard cells
- S. vascular
- Seminal root
- Crown roots
- Lateral roots
- Root cap
- Root apex
- R. stele
- R. cortex/end.
- R. epidermis
- Constitutive

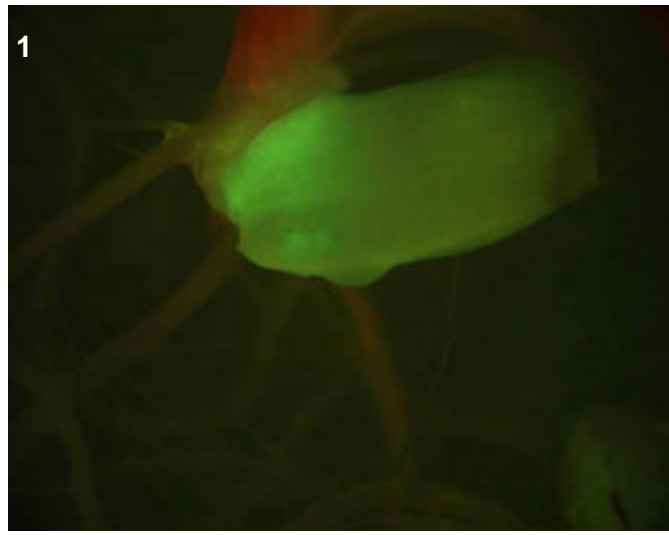
T1 Mature

- T0 pattern verified:
- T0 pattern verified plus:
- New pattern:
- No GFP detected

T1 in greenhouse?
YES, 2 GFP+ plants

Confocal?

Number T2 seed produced: 37



T0 comments

T1 seed comments

T1 seedling comments

Genotype: ART B10

Screened

- T0 mature plant
- T1 seed
- T1 seedling
- T1 mature plants

Expression

- None
- Bright
- Medium
- Weak
- Unsure

Pictures

T0 mature plant:

T1 seed/seedling: 1

T1 mature plant:

T0 Flower

- YES
- POSSIBLE
- Stamen: anther
- Stamen: filament
- Carpel: stigma
- Carpel: style
- Carpel: ovary
- Carpel: base
- Lemma/palea
- Lodicule
- Rachilla
- Sterile lemma
- Pedicel
- Guard cells
- Trichomes
- Vascular

T0 Blade

- YES
- POSSIBLE
- Vascular
- Guard cells
- Trichomes
- Mesophyll

T0 Sheath

- YES
- POSSIBLE
- Collar
- Vascular
- Trichomes
- Guard cells
- Mesophyll

T1 Seed

- YES
- POSSIBLE
- Embryo
- Coleorhiza
- Scutellum
- Aleurone/Endo.
- Vasc. bundle

T1 Seedling

- YES
- POSSIBLE
- SHOOT
- ROOT
- ENDOSPERM
- Coleoptile
- Sheath tissue
- Blade tissue
- Leaf tip
- Collar
- Trichomes
- Guard cells
- S. vascular
- Seminal root
- Crown roots
- Lateral roots
- Root cap
- Root apex
- R. stele
- R. cortex/end.
- R. epidermis
- Constitutive

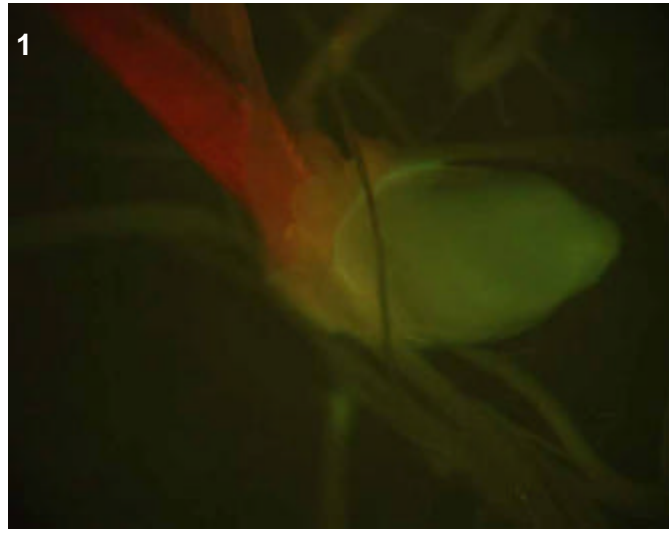
T1 Mature

- T0 pattern verified:
- T0 pattern verified plus:
- New pattern:
- No GFP detected

T1 in greenhouse?
YES, 3 GFP+ plants

Confocal?

Number T2 seed produced: 6



T0 comments

T1 seed comments

T1 seedling comments

Just some expression near scutellum region of the digesting seed (pic 1).

Genotype: ART C04

Screened

- T0 mature plant
- T1 seed
- T1 seedling
- T1 mature plants

Expression

- None
- Bright
- Medium
- Weak
- Unsure

Pictures

T0 mature plant:

T1 seed/seedling: 1

T1 mature plant:

T0 Flower

- YES
- POSSIBLE
- Stamen: anther
- Stamen: filament
- Carpel: stigma
- Carpel: style
- Carpel: ovary
- Carpel: base
- Lemma/palea
- Lodicule
- Rachilla
- Sterile lemma
- Pedicel
- Guard cells
- Trichomes
- Vascular

T0 Blade

- YES
- POSSIBLE
- Vascular
- Guard cells
- Trichomes
- Mesophyll

T0 Sheath

- YES
- POSSIBLE
- Collar
- Vascular
- Trichomes
- Guard cells
- Mesophyll

T1 Seed

- YES
- POSSIBLE
- Embryo
- Coleorhiza
- Scutellum
- Aleurone/Endo.
- Vasc. bundle

T1 Seedling

- YES
- POSSIBLE
- SHOOT
- ROOT
- ENDOSPERM
- Coleoptile
- Sheath tissue
- Blade tissue
- Leaf tip
- Collar
- Trichomes
- Guard cells
- S. vascular
- Seminal root
- Crown roots
- Lateral roots
- Root cap
- Root apex
- R. stele
- R. cortex/end.
- R. epidermis
- Constitutive

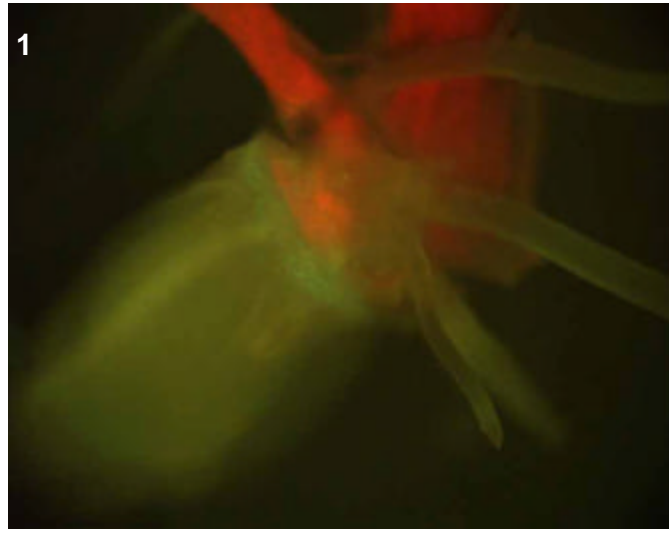
T1 Mature

- T0 pattern verified:
- T0 pattern verified plus:
- New pattern:
- No GFP detected

T1 in greenhouse?
YES, 1 GFP+ plant

Confocal?

Number T2 seed produced: 4



T0 comments

T1 seed comments

T1 seedling comments

Just some expression near scutellum region of the digesting seed (pic 1).

Genotype: ARY C09

Screened

- T0 mature plant
- T1 seed
- T1 seedling
- T1 mature plants

Expression

- None
- Bright
- Medium
- Weak
- Unsure

Pictures

T0 mature plant:

T1 seed/seedling: 1-2

T1 mature plant:

T0 Flower

- YES
- POSSIBLE
- Stamen: anther
- Stamen: filament
- Carpel: stigma
- Carpel: style
- Carpel: ovary
- Carpel: base
- Lemma/palea
- Lodicule
- Rachilla
- Sterile lemma
- Pedicel
- Guard cells
- Trichomes
- Vascular

T0 Blade

- YES
- POSSIBLE
- Vascular
- Guard cells
- Trichomes
- Mesophyll

T0 Sheath

- YES
- POSSIBLE
- Collar
- Vascular
- Trichomes
- Guard cells
- Mesophyll

T1 Seed

- YES
- POSSIBLE
- Embryo
- Coleorhiza
- Scutellum
- Aleurone/Endo.
- Vasc. bundle

T1 Seedling

- YES
- POSSIBLE
- SHOOT
- ROOT
- ENDOSPERM
- Coleoptile
- Sheath tissue
- Blade tissue
- Leaf tip
- Collar
- Trichomes
- Guard cells
- S. vascular
- Seminal root
- Crown roots
- Lateral roots
- Root cap
- Root apex
- R. stele
- R. cortex/end.
- R. epidermis
- Constitutive

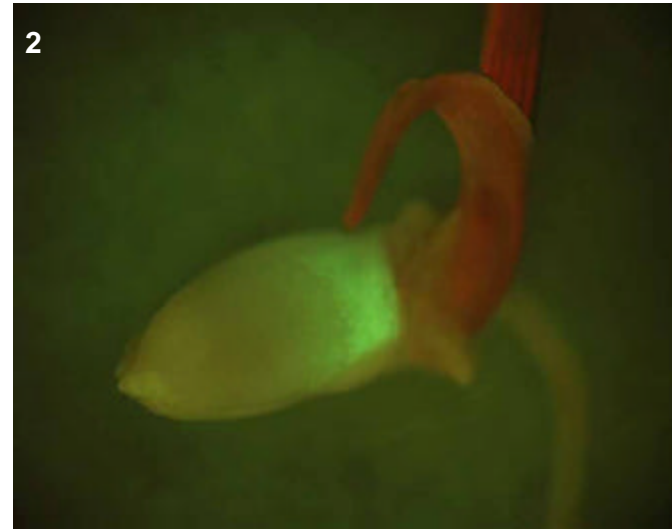
T1 Mature

- T0 pattern verified:
- T0 pattern verified plus:
- New pattern:
- No GFP detected

T1 in greenhouse?
YES, 2 GFP+ plants

Confocal?

Number T2 seed produced: 0



T0 comments

T1 seed comments

3/5 seeds had expression.

T1 seedling comments

Genotype: ARY D09

Screened

- T0 mature plant
- T1 seed
- T1 seedling
- T1 mature plants

Expression

- None
- Bright
- Medium
- Weak
- Unsure

Pictures

T0 mature plant:

T1 seed/seedling: 1

T1 mature plant:

T0 Flower

- YES
- POSSIBLE
- Stamen: anther
- Stamen: filament
- Carpel: stigma
- Carpel: style
- Carpel: ovary
- Carpel: base
- Lemma/palea
- Lodicule
- Rachilla
- Sterile lemma
- Pedicel
- Guard cells
- Trichomes
- Vascular

T0 Blade

- YES
- POSSIBLE
- Vascular
- Guard cells
- Trichomes
- Mesophyll

T0 Sheath

- YES
- POSSIBLE
- Collar
- Vascular
- Trichomes
- Guard cells
- Mesophyll

T1 Seed

- YES
- POSSIBLE
- Embryo
- Coleorhiza
- Scutellum
- Aleurone/Endo.
- Vasc. bundle

T1 Seedling

- YES
- POSSIBLE
- SHOOT
- ROOT
- ENDOSPERM
- Coleoptile
- Sheath tissue
- Blade tissue
- Leaf tip
- Collar
- Trichomes
- Guard cells
- S. vascular
- Seminal root
- Crown roots
- Lateral roots
- Root cap
- Root apex
- R. stele
- R. cortex/end.
- R. epidermis
- Constitutive

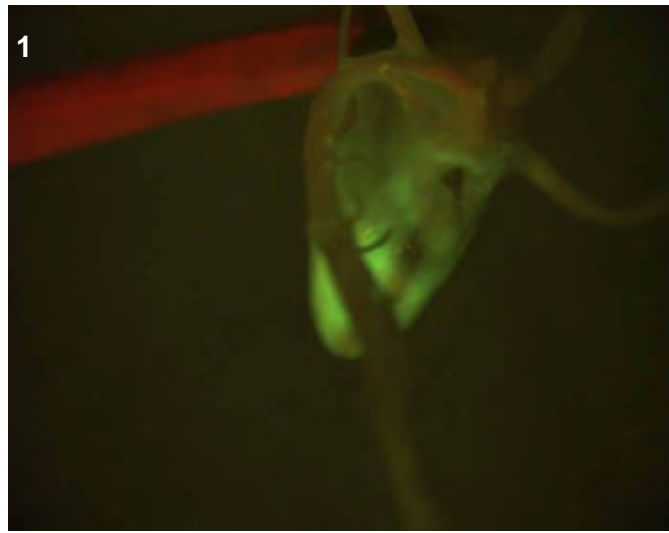
T1 Mature

- T0 pattern verified:
- T0 pattern verified plus:
- New pattern:
- No GFP detected

T1 in greenhouse?
YES, 2 GFP+ plants

Confocal?

Number T2 seed produced: 0



T0 comments

T1 seed comments

T1 seedling comments

Genotype: ARY F10

Screened

- T0 mature plant
- T1 seed
- T1 seedling
- T1 mature plants

Expression

- None
- Bright
- Medium
- Weak
- Unsure

Pictures

T0 mature plant:

T1 seed/seedling: 1

T1 mature plant:

T0 Flower

- YES
- POSSIBLE
- Stamen: anther
- Stamen: filament
- Carpel: stigma
- Carpel: style
- Carpel: ovary
- Carpel: base
- Lemma/palea
- Lodicule
- Rachilla
- Sterile lemma
- Pedicel
- Guard cells
- Trichomes
- Vascular

T0 Blade

- YES
- POSSIBLE
- Vascular
- Guard cells
- Trichomes
- Mesophyll

T0 Sheath

- YES
- POSSIBLE
- Collar
- Vascular
- Trichomes
- Guard cells
- Mesophyll

T1 Seed

- YES
- POSSIBLE
- Embryo
- Coleorhiza
- Scutellum
- Aleurone/Endo.
- Vasc. bundle

T1 Seedling

- YES
- POSSIBLE
- SHOOT
- ROOT
- ENDOSPERM
- Coleoptile
- Sheath tissue
- Blade tissue
- Leaf tip
- Collar
- Trichomes
- Guard cells
- S. vascular
- Seminal root
- Crown roots
- Lateral roots
- Root cap
- Root apex
- R. stele
- R. cortex/end.
- R. epidermis
- Constitutive

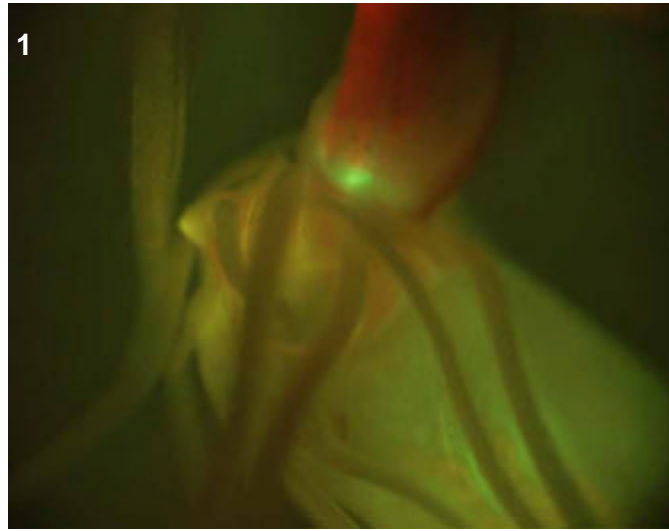
T1 Mature

- T0 pattern verified:
- T0 pattern verified plus:
- New pattern:
- No GFP detected

T1 in greenhouse?
YES, 2 GFP+ plants

Confocal?

Number T2 seed produced: 21



T0 comments

T1 seed comments

T1 seedling comments

Genotype: ARZ C11

Screened

- T0 mature plant
- T1 seed
- T1 seedling
- T1 mature plants

Expression

- None
- Bright
- Medium
- Weak
- Unsure

Pictures

T0 mature plant:

T1 seed/seedling: 1

T1 mature plant:

T0 Flower

- YES
- POSSIBLE
- Stamen: anther
- Stamen: filament
- Carpel: stigma
- Carpel: style
- Carpel: ovary
- Carpel: base
- Lemma/palea
- Lodicule
- Rachilla
- Sterile lemma
- Pedicel
- Guard cells
- Trichomes
- Vascular

T0 Blade

- YES
- POSSIBLE
- Vascular
- Guard cells
- Trichomes
- Mesophyll

T0 Sheath

- YES
- POSSIBLE
- Collar
- Vascular
- Trichomes
- Guard cells
- Mesophyll

T1 Seed

- YES
- POSSIBLE
- Embryo
- Coleorhiza
- Scutellum
- Aleurone/Endo.
- Vasc. bundle

T1 Seedling

- YES
- POSSIBLE
- SHOOT
- ROOT
- ENDOSPERM
- Coleoptile
- Sheath tissue
- Blade tissue
- Leaf tip
- Collar
- Trichomes
- Guard cells
- S. vascular
- Seminal root
- Crown roots
- Lateral roots
- Root cap
- Root apex
- R. stele
- R. cortex/end.
- R. epidermis
- Constitutive

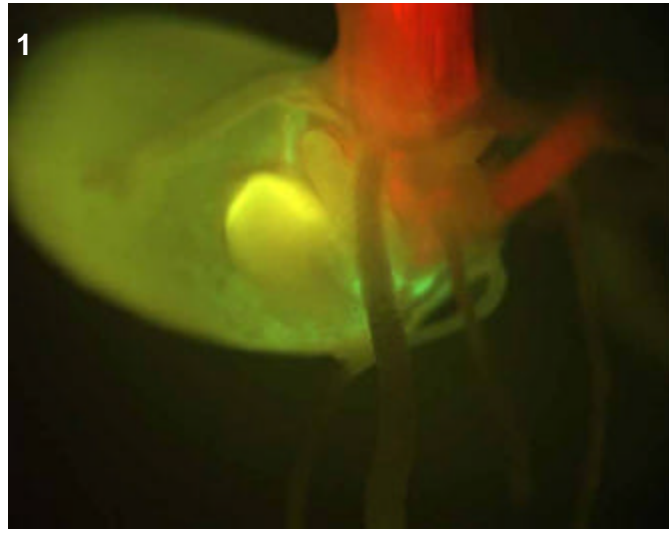
T1 Mature

- T0 pattern verified:
- T0 pattern verified plus:
- New pattern:
- No GFP detected

T1 in greenhouse?
YES, 3 GFP+ plants

Confocal?

Number T2 seed produced: 16



T0 comments

T1 seed comments

T1 seedling comments

Genotype: ARZ G03

Screened

- T0 mature plant
- T1 seed
- T1 seedling
- T1 mature plants

Expression

- None
- Bright
- Medium
- Weak
- Unsure

Pictures

T0 mature plant:

T1 seed/seedling: 1

T1 mature plant:

T0 Flower

- YES
- POSSIBLE
- Stamen: anther
- Stamen: filament
- Carpel: stigma
- Carpel: style
- Carpel: ovary
- Carpel: base
- Lemma/palea
- Lodicule
- Rachilla
- Sterile lemma
- Pedicel
- Guard cells
- Trichomes
- Vascular

T0 Blade

- YES
- POSSIBLE
- Vascular
- Guard cells
- Trichomes
- Mesophyll

T0 Sheath

- YES
- POSSIBLE
- Collar
- Vascular
- Trichomes
- Guard cells
- Mesophyll

T1 Seed

- YES
- POSSIBLE
- Embryo
- Coleorhiza
- Scutellum
- Aleurone/Endo.
- Vasc. bundle

T1 Seedling

- YES
- POSSIBLE
- SHOOT
- ROOT
- ENDOSPERM
- Coleoptile
- Sheath tissue
- Blade tissue
- Leaf tip
- Collar
- Trichomes
- Guard cells
- S. vascular
- Seminal root
- Crown roots
- Lateral roots
- Root cap
- Root apex
- R. stele
- R. cortex/end.
- R. epidermis
- Constitutive

T1 Mature

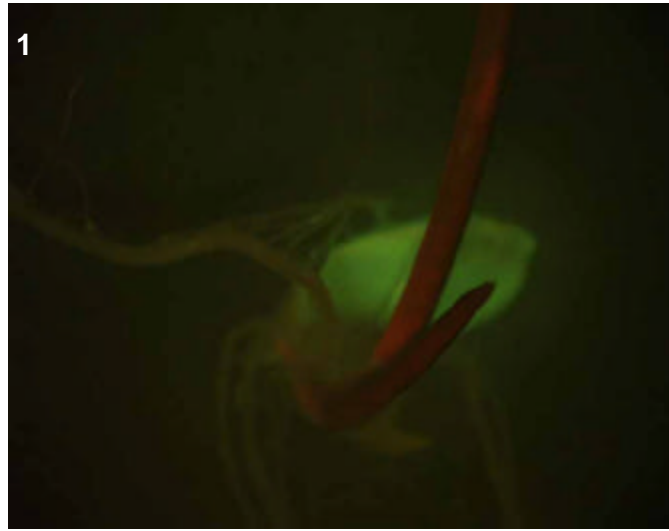
- T0 pattern verified:
- T0 pattern verified plus:
- New pattern:
- No GFP detected

T1 in greenhouse?

YES, 1 GFP+ plant

Confocal?

Number T2 seed produced: 2



T0 comments

T1 seed comments

T1 seedling comments

Genotype: ASA A11

Screened

- T0 mature plant
- T1 seed
- T1 seedling
- T1 mature plants

Expression

- None
- Bright
- Medium
- Weak
- Unsure

Pictures

T0 mature plant:

T1 seed/seedling: 1

T1 mature plant:

T0 Flower

- YES
- POSSIBLE
- Stamen: anther
- Stamen: filament
- Carpel: stigma
- Carpel: style
- Carpel: ovary
- Carpel: base
- Lemma/palea
- Lodicule
- Rachilla
- Sterile lemma
- Pedicel
- Guard cells
- Trichomes
- Vascular

T0 Blade

- YES
- POSSIBLE
- Vascular
- Guard cells
- Trichomes
- Mesophyll

T0 Sheath

- YES
- POSSIBLE
- Collar
- Vascular
- Trichomes
- Guard cells
- Mesophyll

T1 Seed

- YES
- POSSIBLE
- Embryo
- Coleorhiza
- Scutellum
- Aleurone/Endo.
- Vasc. bundle

T1 Seedling

- YES
- POSSIBLE
- SHOOT
- ROOT
- ENDOSPERM
- Coleoptile
- Sheath tissue
- Blade tissue
- Leaf tip
- Collar
- Trichomes
- Guard cells
- S. vascular
- Seminal root
- Crown roots
- Lateral roots
- Root cap
- Root apex
- R. stele
- R. cortex/end.
- R. epidermis
- Constitutive

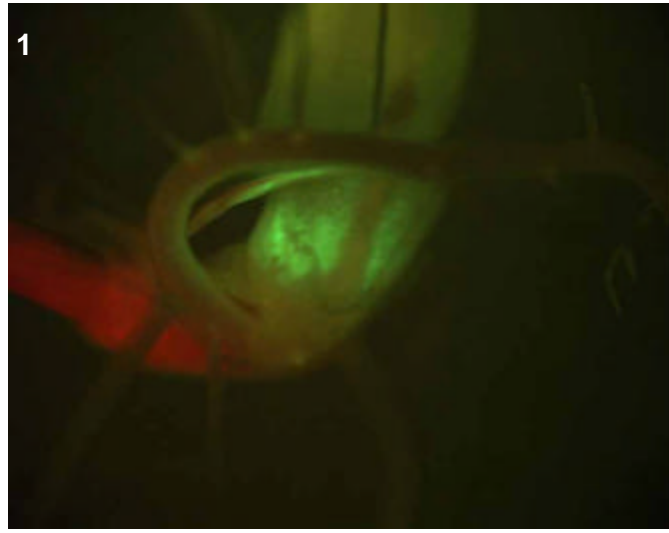
T1 Mature

- T0 pattern verified:
- T0 pattern verified plus:
- New pattern:
- No GFP detected

T1 in greenhouse?
YES, 3 GFP+ plants

Confocal?

Number T2 seed produced:



T0 comments

T1 seed comments

T1 seedling comments

Genotype: ASA C01

Screened

- T0 mature plant
- T1 seed
- T1 seedling
- T1 mature plants

Expression

- None
- Bright
- Medium
- Weak
- Unsure

Pictures

T0 mature plant:

T1 seed/seedling: 1

T1 mature plant:

T0 Flower

- YES
- POSSIBLE
- Stamen: anther
- Stamen: filament
- Carpel: stigma
- Carpel: style
- Carpel: ovary
- Carpel: base
- Lemma/palea
- Lodicule
- Rachilla
- Sterile lemma
- Pedicel
- Guard cells
- Trichomes
- Vascular

T0 Blade

- YES
- POSSIBLE
- Vascular
- Guard cells
- Trichomes
- Mesophyll

T0 Sheath

- YES
- POSSIBLE
- Collar
- Vascular
- Trichomes
- Guard cells
- Mesophyll

T1 Seed

- YES
- POSSIBLE
- Embryo
- Coleorhiza
- Scutellum
- Aleurone/Endo.
- Vasc. bundle

T1 Seedling

- YES
- POSSIBLE
- SHOOT
- ROOT
- ENDOSPERM
- Coleoptile
- Sheath tissue
- Blade tissue
- Leaf tip
- Collar
- Trichomes
- Guard cells
- S. vascular
- Seminal root
- Crown roots
- Lateral roots
- Root cap
- Root apex
- R. stele
- R. cortex/end.
- R. epidermis
- Constitutive

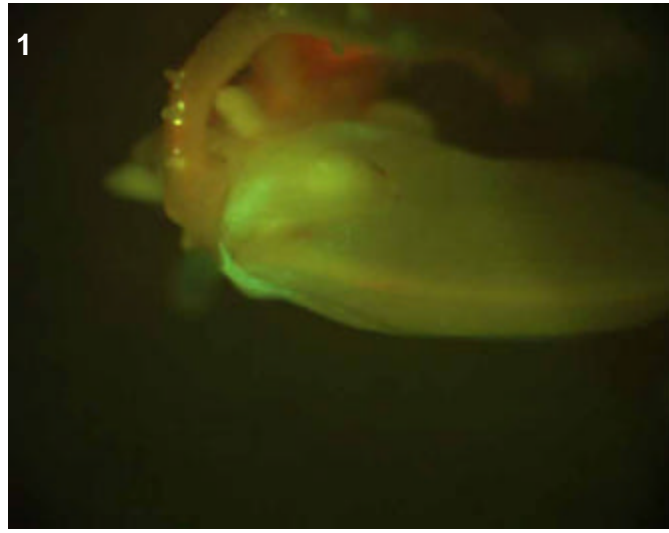
T1 Mature

- T0 pattern verified:
- T0 pattern verified plus:
- New pattern:
- No GFP detected

T1 in greenhouse?
YES, 3 GFP+ plants

Confocal?

Number T2 seed produced: 3



T0 comments

T1 seed comments

T1 seedling comments

Genotype: ASA C02

Screened

- T0 mature plant
- T1 seed
- T1 seedling
- T1 mature plants

Expression

- None
- Bright
- Medium
- Weak
- Unsure

Pictures

T0 mature plant:

T1 seed/seedling: 1-2

T1 mature plant:

T0 Flower

- YES
- POSSIBLE
- Stamen: anther
- Stamen: filament
- Carpel: stigma
- Carpel: style
- Carpel: ovary
- Carpel: base
- Lemma/palea
- Lodicule
- Rachilla
- Sterile lemma
- Pedicel
- Guard cells
- Trichomes
- Vascular

T0 Blade

- YES
- POSSIBLE
- Vascular
- Guard cells
- Trichomes
- Mesophyll

T0 Sheath

- YES
- POSSIBLE
- Collar
- Vascular
- Trichomes
- Guard cells
- Mesophyll

T1 Seed

- YES
- POSSIBLE
- Embryo
- Coleorhiza
- Scutellum
- Aleurone/Endo.
- Vasc. bundle

T1 Seedling

- YES
- POSSIBLE
- SHOOT
- ROOT
- ENDOSPERM
- Coleoptile
- Sheath tissue
- Blade tissue
- Leaf tip
- Collar
- Trichomes
- Guard cells
- S. vascular
- Seminal root
- Crown roots
- Lateral roots
- Root cap
- Root apex
- R. stele
- R. cortex/end.
- R. epidermis
- Constitutive

T1 Mature

T0 pattern verified:

T0 pattern verified plus:

New pattern:

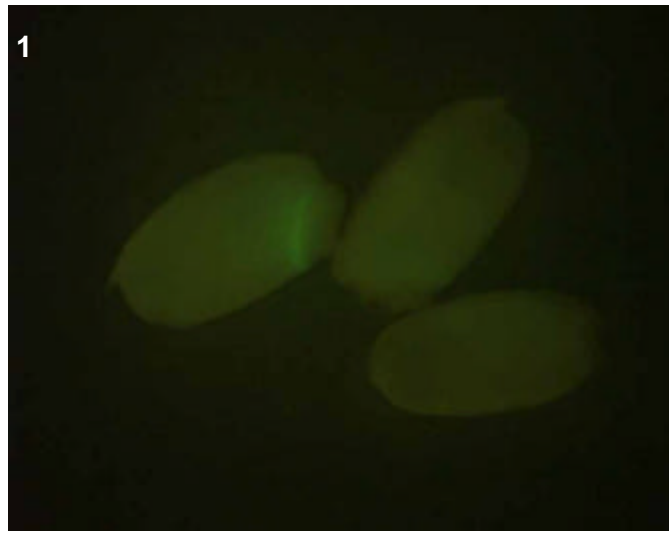
No GFP detected

T1 in greenhouse?
YES, 3 GFP+ plants

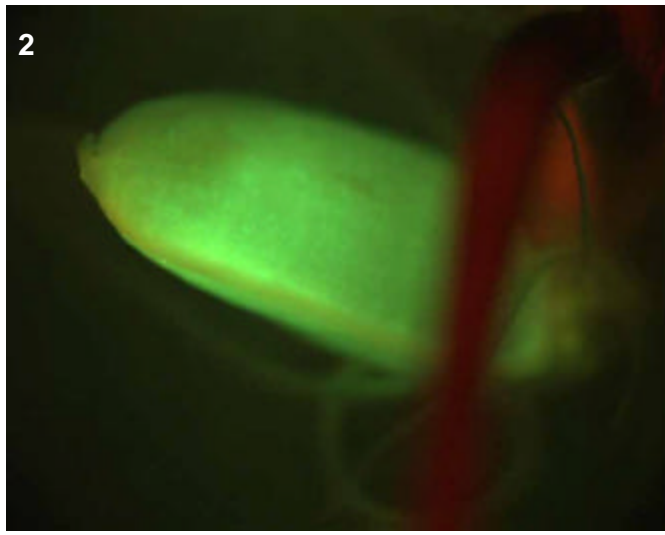
Confocal?

Number T2 seed produced: 25

1



2



T0 comments

T1 seed comments

2/5 seeds had medium expression.

T1 seedling comments

A bright endosperm-specific line (picture 2).

Genotype: ASA C03

Screened

- T0 mature plant
- T1 seed
- T1 seedling
- T1 mature plants

Expression

- None
- Bright
- Medium
- Weak
- Unsure

Pictures

T0 mature plant:

T1 seed/seedling: 1-3

T1 mature plant:

T0 Flower

- YES
- POSSIBLE
- Stamen: anther
- Stamen: filament
- Carpel: stigma
- Carpel: style
- Carpel: ovary
- Carpel: base
- Lemma/palea
- Lodicule
- Rachilla
- Sterile lemma
- Pedicel
- Guard cells
- Trichomes
- Vascular

T0 Blade

- YES
- POSSIBLE
- Vascular
- Guard cells
- Trichomes
- Mesophyll

T0 Sheath

- YES
- POSSIBLE
- Collar
- Vascular
- Trichomes
- Guard cells
- Mesophyll

T1 Seed

- YES
- POSSIBLE
- Embryo
- Coleorhiza
- Scutellum
- Aleurone/Endo.
- Vasc. bundle

T1 Seedling

- YES
- POSSIBLE
- SHOOT
- ROOT
- ENDOSPERM
- Coleoptile
- Sheath tissue
- Blade tissue
- Leaf tip
- Collar
- Trichomes
- Guard cells
- S. vascular
- Seminal root
- Crown roots
- Lateral roots
- Root cap
- Root apex
- R. stele
- R. cortex/end.
- R. epidermis
- Constitutive

T1 Mature

T0 pattern verified:

T0 pattern verified plus:

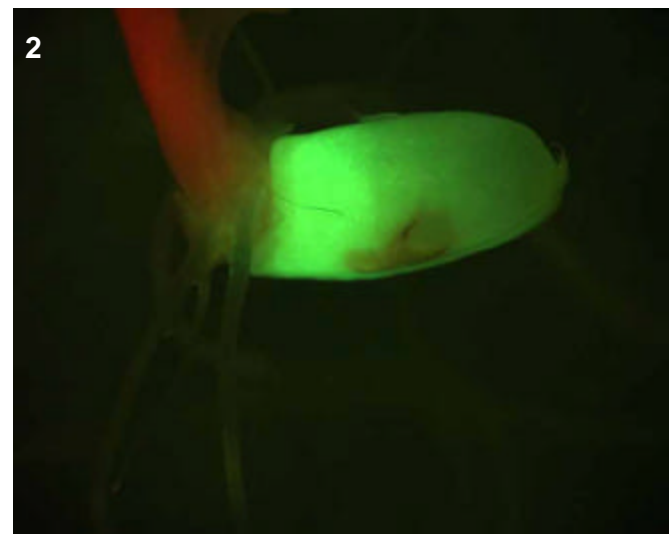
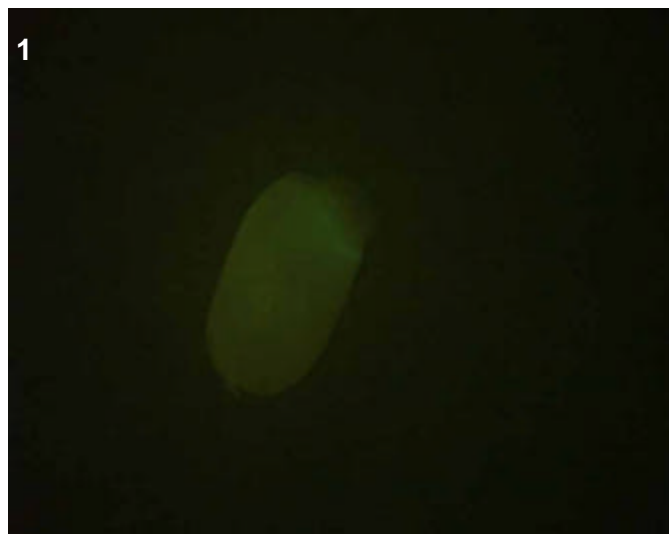
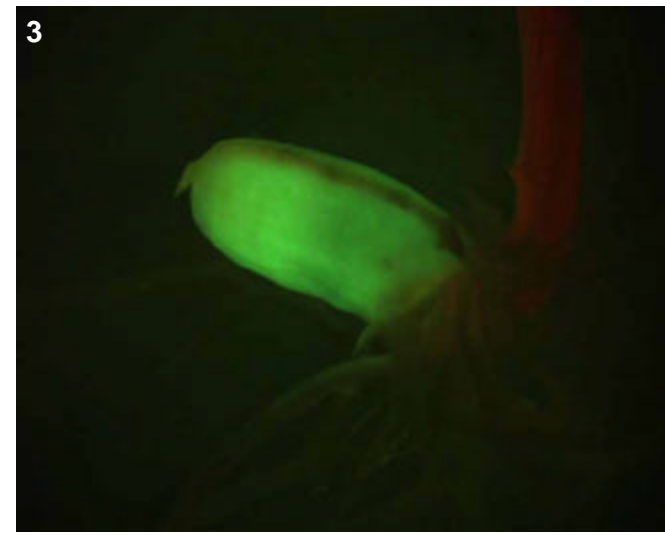
New pattern:

No GFP detected

T1 in greenhouse?
YES, 3 GFP+ plants

Confocal?

Number T2 seed produced: 7



T0 comments

T1 seed comments

3/5 seeds had weak expression.

T1 seedling comments

A bright endosperm-specific line (pics 2-3). Perhaps this line and the preceding, ASA C02, are clonal copies?

Genotype: ASB F06

Screened

- T0 mature plant
- T1 seed
- T1 seedling
- T1 mature plants

Expression

- None
- Bright
- Medium
- Weak
- Unsure

Pictures

T0 mature plant:

T1 seed/seedling: 1

T1 mature plant:

T0 Flower

- YES
- POSSIBLE
- Stamen: anther
- Stamen: filament
- Carpel: stigma
- Carpel: style
- Carpel: ovary
- Carpel: base
- Lemma/palea
- Lodicule
- Rachilla
- Sterile lemma
- Pedicel
- Guard cells
- Trichomes
- Vascular

T0 Blade

- YES
- POSSIBLE
- Vascular
- Guard cells
- Trichomes
- Mesophyll

T0 Sheath

- YES
- POSSIBLE
- Collar
- Vascular
- Trichomes
- Guard cells
- Mesophyll

T1 Seed

- YES
- POSSIBLE
- Embryo
- Coleorhiza
- Scutellum
- Aleurone/Endo.
- Vasc. bundle

T1 Seedling

- YES
- POSSIBLE
- SHOOT
- ROOT
- ENDOSPERM
- Coleoptile
- Sheath tissue
- Blade tissue
- Leaf tip
- Collar
- Trichomes
- Guard cells
- S. vascular
- Seminal root
- Crown roots
- Lateral roots
- Root cap
- Root apex
- R. stele
- R. cortex/end.
- R. epidermis
- Constitutive

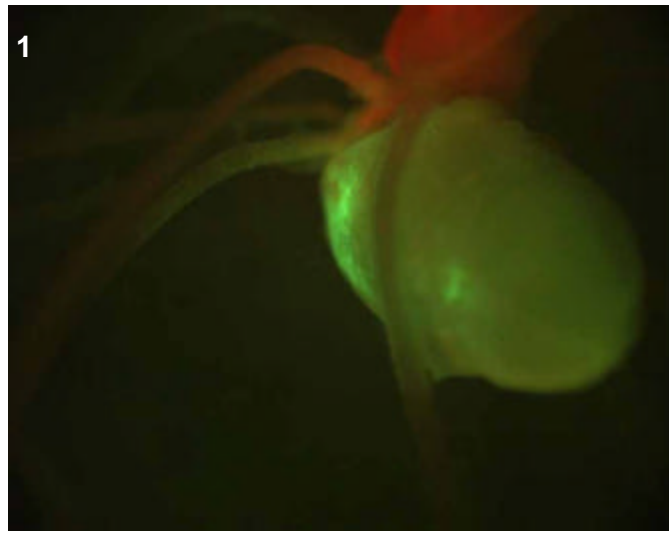
T1 Mature

- T0 pattern verified:
- T0 pattern verified plus:
- New pattern:
- No GFP detected

T1 in greenhouse?
YES, 3 GFP+ plants

Confocal?

Number T2 seed produced: 0



T0 comments

T1 seed comments

T1 seedling comments

Genotype: ASB H04

Screened

- T0 mature plant
- T1 seed
- T1 seedling
- T1 mature plants

Expression

- None
- Bright
- Medium
- Weak
- Unsure

Pictures

T0 mature plant:

T1 seed/seedling: 1

T1 mature plant:

T0 Flower

- YES
- POSSIBLE
- Stamen: anther
- Stamen: filament
- Carpel: stigma
- Carpel: style
- Carpel: ovary
- Carpel: base
- Lemma/palea
- Lodicule
- Rachilla
- Sterile lemma
- Pedicel
- Guard cells
- Trichomes
- Vascular

T0 Blade

- YES
- POSSIBLE
- Vascular
- Guard cells
- Trichomes
- Mesophyll

T0 Sheath

- YES
- POSSIBLE
- Collar
- Vascular
- Trichomes
- Guard cells
- Mesophyll

T1 Seed

- YES
- POSSIBLE
- Embryo
- Coleorhiza
- Scutellum
- Aleurone/Endo.
- Vasc. bundle

T1 Seedling

- YES
- POSSIBLE
- SHOOT
- ROOT
- ENDOSPERM
- Coleoptile
- Sheath tissue
- Blade tissue
- Leaf tip
- Collar
- Trichomes
- Guard cells
- S. vascular
- Seminal root
- Crown roots
- Lateral roots
- Root cap
- Root apex
- R. stele
- R. cortex/end.
- R. epidermis
- Constitutive

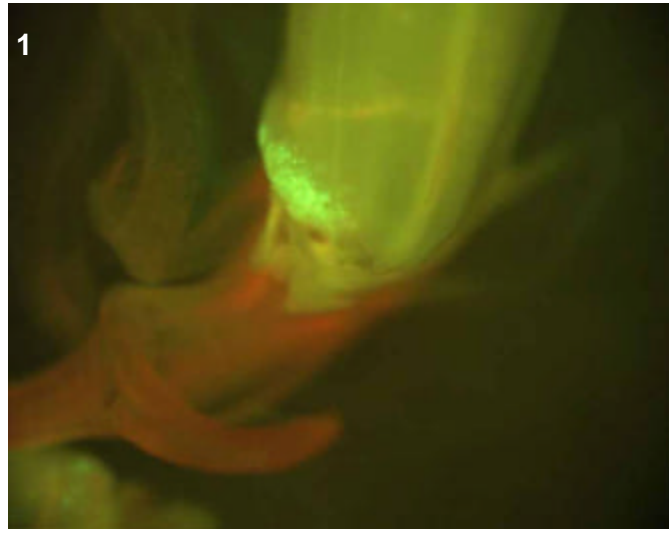
T1 Mature

- T0 pattern verified:
- T0 pattern verified plus:
- New pattern:
- No GFP detected

T1 in greenhouse?
YES, 2 GFP+ plants

Confocal?

Number T2 seed produced: 0



T0 comments

T1 seed comments

T1 seedling comments

Genotype: ASC G09

Screened

- T0 mature plant
- T1 seed
- T1 seedling
- T1 mature plants

Expression

- None
- Bright
- Medium
- Weak
- Unsure

Pictures

T0 mature plant:

T1 seed/seedling: 1

T1 mature plant:

T0 Flower

- YES
- POSSIBLE
- Stamen: anther
- Stamen: filament
- Carpel: stigma
- Carpel: style
- Carpel: ovary
- Carpel: base
- Lemma/palea
- Lodicule
- Rachilla
- Sterile lemma
- Pedicel
- Guard cells
- Trichomes
- Vascular

T0 Blade

- YES
- POSSIBLE
- Vascular
- Guard cells
- Trichomes
- Mesophyll

T0 Sheath

- YES
- POSSIBLE
- Collar
- Vascular
- Trichomes
- Guard cells
- Mesophyll

T1 Seed

- YES
- POSSIBLE
- Embryo
- Coleorhiza
- Scutellum
- Aleurone/Endo.
- Vasc. bundle

T1 Seedling

- YES
- POSSIBLE
- SHOOT
- ROOT
- ENDOSPERM
- Coleoptile
- Sheath tissue
- Blade tissue
- Leaf tip
- Collar
- Trichomes
- Guard cells
- S. vascular
- Seminal root
- Crown roots
- Lateral roots
- Root cap
- Root apex
- R. stele
- R. cortex/end.
- R. epidermis
- Constitutive

T1 Mature

T0 pattern verified:

T0 pattern verified plus:

New pattern:

No GFP detected

T1 in greenhouse?
YES, 1 GFP+ plant

Confocal?

Number T2 seed produced: 0



T0 comments

T1 seed comments

T1 seedling comments

Genotype: ASC G11

Screened

- T0 mature plant
- T1 seed
- T1 seedling
- T1 mature plants

Expression

- None
- Bright
- Medium
- Weak
- Unsure

Pictures

T0 mature plant:

T1 seed/seedling: 1

T1 mature plant:

T0 Flower

- YES
- POSSIBLE
- Stamen: anther
- Stamen: filament
- Carpel: stigma
- Carpel: style
- Carpel: ovary
- Carpel: base
- Lemma/palea
- Lodicule
- Rachilla
- Sterile lemma
- Pedicel
- Guard cells
- Trichomes
- Vascular

T0 Blade

- YES
- POSSIBLE
- Vascular
- Guard cells
- Trichomes
- Mesophyll

T0 Sheath

- YES
- POSSIBLE
- Collar
- Vascular
- Trichomes
- Guard cells
- Mesophyll

T1 Seed

- YES
- POSSIBLE
- Embryo
- Coleorhiza
- Scutellum
- Aleurone/Endo.
- Vasc. bundle

T1 Seedling

- YES
- POSSIBLE
- SHOOT
- ROOT
- ENDOSPERM
- Coleoptile
- Sheath tissue
- Blade tissue
- Leaf tip
- Collar
- Trichomes
- Guard cells
- S. vascular
- Seminal root
- Crown roots
- Lateral roots
- Root cap
- Root apex
- R. stele
- R. cortex/end.
- R. epidermis
- Constitutive

T1 Mature

T0 pattern verified:

T0 pattern verified plus:

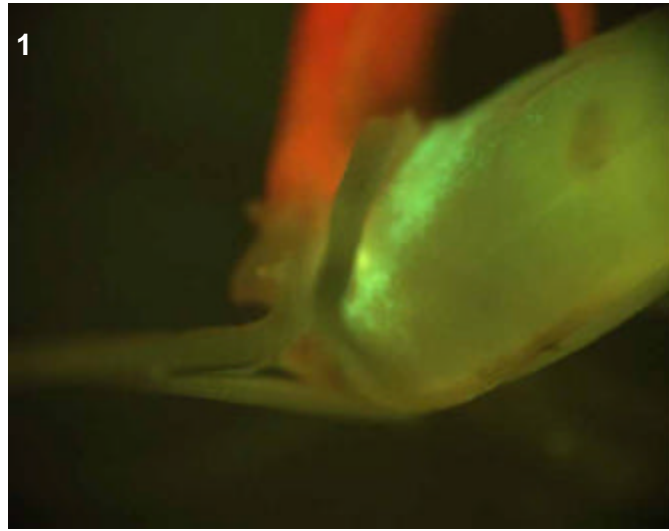
New pattern:

No GFP detected

T1 in greenhouse?
YES, 1 GFP+ plant

Confocal?

Number T2 seed produced: 0



T0 comments

T1 seed comments

T1 seedling comments

Genotype: ASC H08

Screened

- T0 mature plant
- T1 seed
- T1 seedling
- T1 mature plants

Expression

- None
- Bright
- Medium
- Weak
- Unsure

Pictures

T0 mature plant:

T1 seed/seedling: 1

T1 mature plant:

T0 Flower

- YES
- POSSIBLE
- Stamen: anther
- Stamen: filament
- Carpel: stigma
- Carpel: style
- Carpel: ovary
- Carpel: base
- Lemma/palea
- Lodicule
- Rachilla
- Sterile lemma
- Pedicel
- Guard cells
- Trichomes
- Vascular

T0 Blade

- YES
- POSSIBLE
- Vascular
- Guard cells
- Trichomes
- Mesophyll

T0 Sheath

- YES
- POSSIBLE
- Collar
- Vascular
- Trichomes
- Guard cells
- Mesophyll

T1 Seed

- YES
- POSSIBLE
- Embryo
- Coleorhiza
- Scutellum
- Aleurone/Endo.
- Vasc. bundle

T1 Seedling

- YES
- POSSIBLE
- SHOOT
- ROOT
- ENDOSPERM
- Coleoptile
- Sheath tissue
- Blade tissue
- Leaf tip
- Collar
- Trichomes
- Guard cells
- S. vascular
- Seminal root
- Crown roots
- Lateral roots
- Root cap
- Root apex
- R. stele
- R. cortex/end.
- R. epidermis
- Constitutive

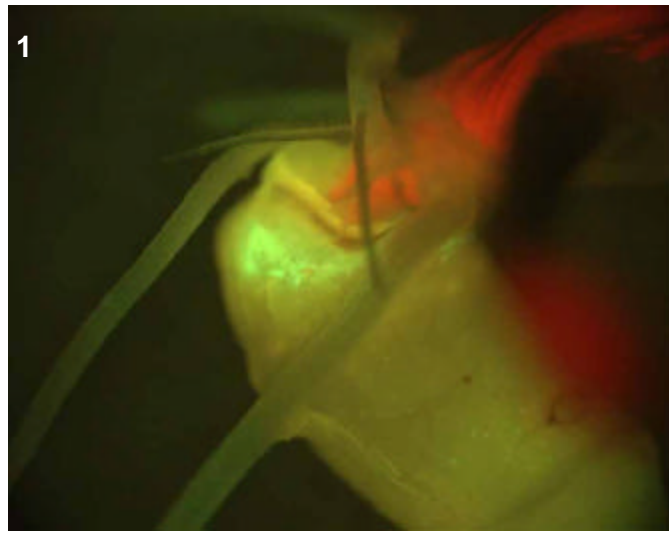
T1 Mature

- T0 pattern verified:
- T0 pattern verified plus:
- New pattern:
- No GFP detected

T1 in greenhouse?
YES, 1 GFP+ plant

Confocal?

Number T2 seed produced: 0



T0 comments

T1 seed comments

T1 seedling comments

Genotype: ASD D03

Screened

- T0 mature plant
- T1 seed
- T1 seedling
- T1 mature plants

Expression

- None
- Bright
- Medium
- Weak
- Unsure

Pictures

T0 mature plant:

T1 seed/seedling: 1

T1 mature plant:

T0 Flower

- YES
- POSSIBLE
- Stamen: anther
- Stamen: filament
- Carpel: stigma
- Carpel: style
- Carpel: ovary
- Carpel: base
- Lemma/palea
- Lodicule
- Rachilla
- Sterile lemma
- Pedicel
- Guard cells
- Trichomes
- Vascular

T0 Blade

- YES
- POSSIBLE
- Vascular
- Guard cells
- Trichomes
- Mesophyll

T0 Sheath

- YES
- POSSIBLE
- Collar
- Vascular
- Trichomes
- Guard cells
- Mesophyll

T1 Seed

- YES
- POSSIBLE
- Embryo
- Coleorhiza
- Scutellum
- Aleurone/Endo.
- Vasc. bundle

T1 Seedling

- YES
- POSSIBLE
- SHOOT
- ROOT
- ENDOSPERM
- Coleoptile
- Sheath tissue
- Blade tissue
- Leaf tip
- Collar
- Trichomes
- Guard cells
- S. vascular
- Seminal root
- Crown roots
- Lateral roots
- Root cap
- Root apex
- R. stele
- R. cortex/end.
- R. epidermis
- Constitutive

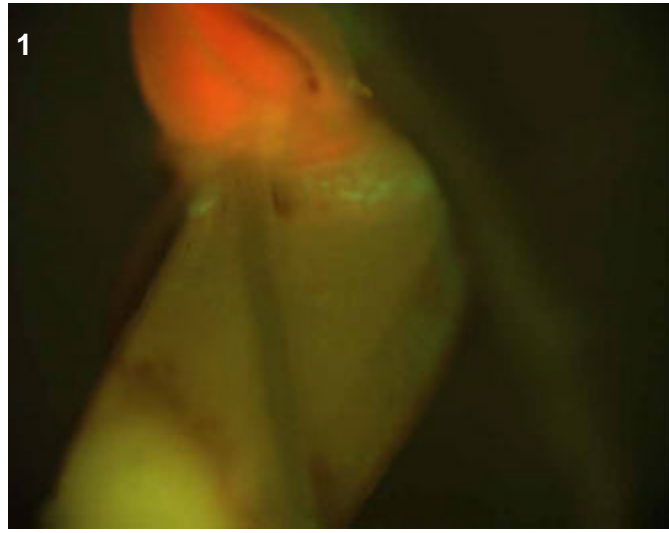
T1 Mature

- T0 pattern verified:
- T0 pattern verified plus:
- New pattern:
- No GFP detected

T1 in greenhouse?
 YES, 3 GFP+ plants

Confocal?

Number T2 seed produced: 35



T0 comments

T1 seed comments

T1 seedling comments

Genotype: ASD G04

Screened

- T0 mature plant
- T1 seed
- T1 seedling
- T1 mature plants

Expression

- None
- Bright
- Medium
- Weak
- Unsure

Pictures

T0 mature plant:

T1 seed/seedling: 1

T1 mature plant:

T0 Flower

- YES
- POSSIBLE
- Stamen: anther
- Stamen: filament
- Carpel: stigma
- Carpel: style
- Carpel: ovary
- Carpel: base
- Lemma/palea
- Lodicule
- Rachilla
- Sterile lemma
- Pedicel
- Guard cells
- Trichomes
- Vascular

T0 Blade

- YES
- POSSIBLE
- Vascular
- Guard cells
- Trichomes
- Mesophyll

T0 Sheath

- YES
- POSSIBLE
- Collar
- Vascular
- Trichomes
- Guard cells
- Mesophyll

T1 Seed

- YES
- POSSIBLE
- Embryo
- Coleorhiza
- Scutellum
- Aleurone/Endo.
- Vasc. bundle

T1 Seedling

- YES
- POSSIBLE
- SHOOT
- ROOT
- ENDOSPERM
- Coleoptile
- Sheath tissue
- Blade tissue
- Leaf tip
- Collar
- Trichomes
- Guard cells
- S. vascular
- Seminal root
- Crown roots
- Lateral roots
- Root cap
- Root apex
- R. stele
- R. cortex/end.
- R. epidermis
- Constitutive

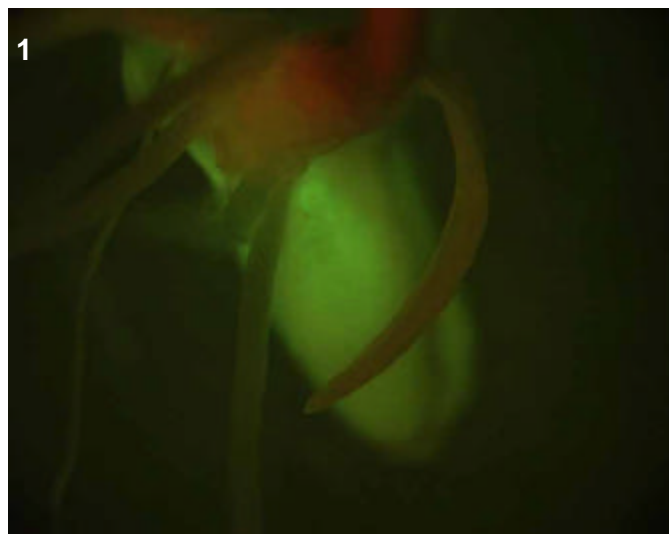
T1 Mature

- T0 pattern verified:
- T0 pattern verified plus:
- New pattern:
- No GFP detected

T1 in greenhouse?
YES, 2 GFP+ plants

Confocal?

Number T2 seed produced: 0



T0 comments

T1 seed comments

T1 seedling comments

Genotype: ASF G10

Screened

- T0 mature plant
- T1 seed
- T1 seedling
- T1 mature plants

Expression

- None
- Bright
- Medium
- Weak
- Unsure

Pictures

T0 mature plant:

T1 seed/seedling: 1-2

T1 mature plant:

T0 Flower

- YES
- POSSIBLE
- Stamen: anther
- Stamen: filament
- Carpel: stigma
- Carpel: style
- Carpel: ovary
- Carpel: base
- Lemma/palea
- Lodicule
- Rachilla
- Sterile lemma
- Pedicel
- Guard cells
- Trichomes
- Vascular

T0 Blade

- YES
- POSSIBLE
- Vascular
- Guard cells
- Trichomes
- Mesophyll

T0 Sheath

- YES
- POSSIBLE
- Collar
- Vascular
- Trichomes
- Guard cells
- Mesophyll

T1 Seed

- YES
- POSSIBLE
- Embryo
- Coleorhiza
- Scutellum
- Aleurone/Endo.
- Vasc. bundle

T1 Seedling

- YES
- POSSIBLE
- SHOOT
- ROOT
- ENDOSPERM
- Coleoptile
- Sheath tissue
- Blade tissue
- Leaf tip
- Collar
- Trichomes
- Guard cells
- S. vascular
- Seminal root
- Crown roots
- Lateral roots
- Root cap
- Root apex
- R. stele
- R. cortex/end.
- R. epidermis
- Constitutive

T1 Mature

T0 pattern verified:

T0 pattern verified plus:

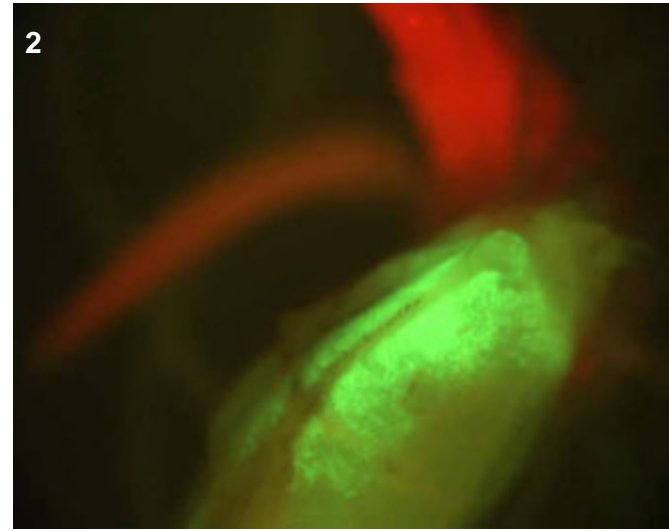
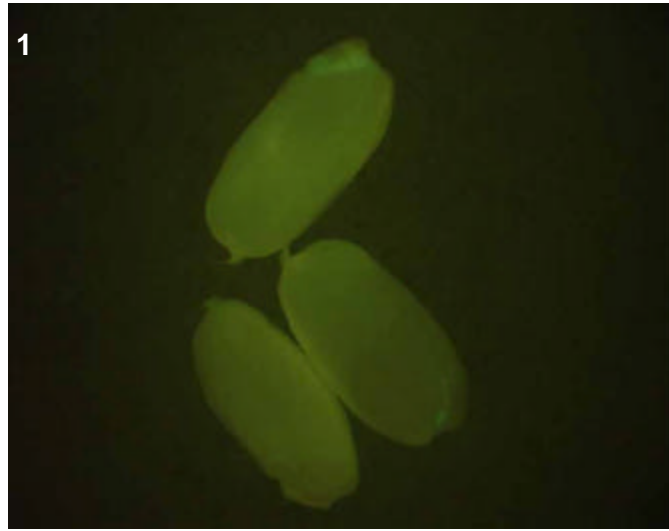
New pattern:

No GFP detected

T1 in greenhouse?
YES, 2 GFP+ plants

Confocal?

Number T2 seed produced:



T0 comments

T1 seed comments

2/5 seeds had expression

T1 seedling comments

Genotype: ASG B11

Screened

- T0 mature plant
- T1 seed
- T1 seedling
- T1 mature plants

Expression

- None
- Bright
- Medium
- Weak
- Unsure

Pictures

T0 mature plant:

T1 seed/seedling: 1

T1 mature plant:

T0 Flower

- YES
- POSSIBLE
- Stamen: anther
- Stamen: filament
- Carpel: stigma
- Carpel: style
- Carpel: ovary
- Carpel: base
- Lemma/palea
- Lodicule
- Rachilla
- Sterile lemma
- Pedicel
- Guard cells
- Trichomes
- Vascular

T0 Blade

- YES
- POSSIBLE
- Vascular
- Guard cells
- Trichomes
- Mesophyll

T0 Sheath

- YES
- POSSIBLE
- Collar
- Vascular
- Trichomes
- Guard cells
- Mesophyll

T1 Seed

- YES
- POSSIBLE
- Embryo
- Coleorhiza
- Scutellum
- Aleurone/Endo.
- Vasc. bundle

T1 Seedling

- YES
- POSSIBLE
- SHOOT
- ROOT
- ENDOSPERM
- Coleoptile
- Sheath tissue
- Blade tissue
- Leaf tip
- Collar
- Trichomes
- Guard cells
- S. vascular
- Seminal root
- Crown roots
- Lateral roots
- Root cap
- Root apex
- R. stele
- R. cortex/end.
- R. epidermis
- Constitutive

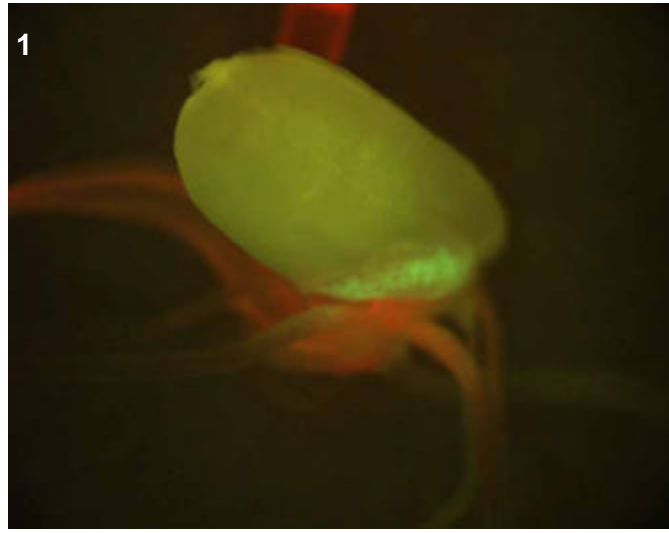
T1 Mature

- T0 pattern verified:
- T0 pattern verified plus:
- New pattern:
- No GFP detected

T1 in greenhouse?
 YES, 2 GFP+ plants

Confocal?

Number T2 seed produced:



T0 comments

T1 seed comments

T1 seedling comments

Genotype: ASH B12

Screened

- T0 mature plant
- T1 seed
- T1 seedling
- T1 mature plants

Expression

- None
- Bright
- Medium
- Weak
- Unsure

Pictures

T0 mature plant:

T1 seed/seedling: 1

T1 mature plant:

T0 Flower

- YES
- POSSIBLE
- Stamen: anther
- Stamen: filament
- Carpel: stigma
- Carpel: style
- Carpel: ovary
- Carpel: base
- Lemma/palea
- Lodicule
- Rachilla
- Sterile lemma
- Pedicel
- Guard cells
- Trichomes
- Vascular

T0 Blade

- YES
- POSSIBLE
- Vascular
- Guard cells
- Trichomes
- Mesophyll

T0 Sheath

- YES
- POSSIBLE
- Collar
- Vascular
- Trichomes
- Guard cells
- Mesophyll

T1 Seed

- YES
- POSSIBLE
- Embryo
- Coleorhiza
- Scutellum
- Aleurone/Endo.
- Vasc. bundle

T1 Seedling

- YES
- POSSIBLE
- SHOOT
- ROOT
- ENDOSPERM
- Coleoptile
- Sheath tissue
- Blade tissue
- Leaf tip
- Collar
- Trichomes
- Guard cells
- S. vascular
- Seminal root
- Crown roots
- Lateral roots
- Root cap
- Root apex
- R. stele
- R. cortex/end.
- R. epidermis
- Constitutive

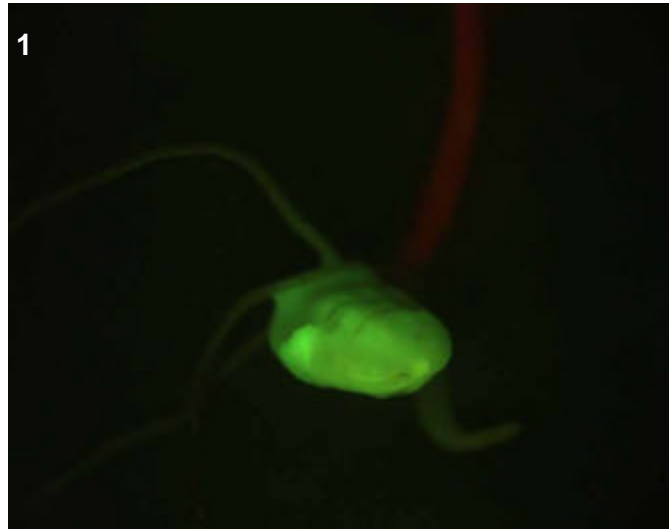
T1 Mature

- T0 pattern verified:
- T0 pattern verified plus:
- New pattern:
- No GFP detected

T1 in greenhouse?
YES, 3 GFP+ plants

Confocal?

Number T2 seed produced:



T0 comments

This line, like all of the ASH lines, was derived from a glowing callus selected during regeneration.

T1 seed comments

T1 seedling comments

Genotype: ASH E01

Screened

- T0 mature plant
- T1 seed
- T1 seedling
- T1 mature plants

Expression

- None
- Bright
- Medium
- Weak
- Unsure

Pictures

T0 mature plant:

T1 seed/seedling: 1

T1 mature plant:

T0 Flower

- YES
- POSSIBLE
- Stamen: anther
- Stamen: filament
- Carpel: stigma
- Carpel: style
- Carpel: ovary
- Carpel: base
- Lemma/palea
- Lodicule
- Rachilla
- Sterile lemma
- Pedicel
- Guard cells
- Trichomes
- Vascular

T0 Blade

- YES
- POSSIBLE
- Vascular
- Guard cells
- Trichomes
- Mesophyll

T0 Sheath

- YES
- POSSIBLE
- Collar
- Vascular
- Trichomes
- Guard cells
- Mesophyll

T1 Seed

- YES
- POSSIBLE
- Embryo
- Coleorhiza
- Scutellum
- Aleurone/Endo.
- Vasc. bundle

T1 Seedling

- YES
- POSSIBLE
- SHOOT
- ROOT
- ENDOSPERM
- Coleoptile
- Sheath tissue
- Blade tissue
- Leaf tip
- Collar
- Trichomes
- Guard cells
- S. vascular
- Seminal root
- Crown roots
- Lateral roots
- Root cap
- Root apex
- R. stele
- R. cortex/end.
- R. epidermis
- Constitutive

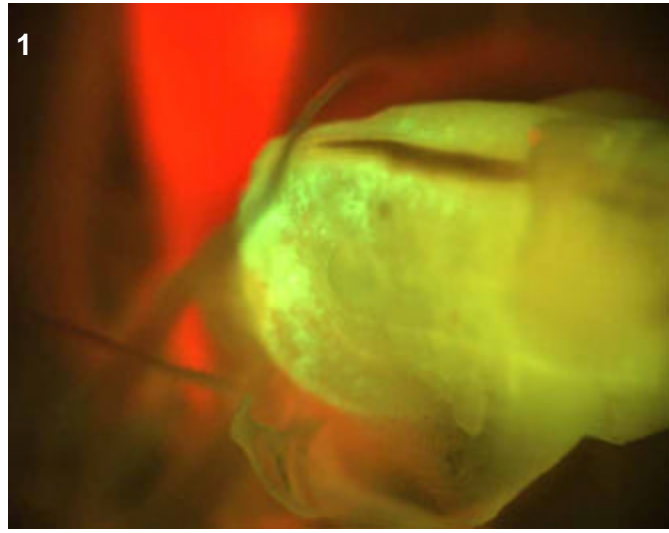
T1 Mature

- T0 pattern verified:
- T0 pattern verified plus:
- New pattern:
- No GFP detected

T1 in greenhouse?
YES, 3 GFP+ plants

Confocal?

Number T2 seed produced:



T0 comments

This line, like all of the ASH lines, was derived from a glowing callus selected during regeneration.

T1 seed comments

T1 seedling comments

Genotype: ASI D11

Screened

- T0 mature plant
- T1 seed
- T1 seedling
- T1 mature plants

Expression

- None
- Bright
- Medium
- Weak
- Unsure

Pictures

T0 mature plant:

T1 seed/seedling: 1-2

T1 mature plant:

T0 Flower

- YES
- POSSIBLE
- Stamen: anther
- Stamen: filament
- Carpel: stigma
- Carpel: style
- Carpel: ovary
- Carpel: base
- Lemma/palea
- Lodicule
- Rachilla
- Sterile lemma
- Pedicel
- Guard cells
- Trichomes
- Vascular

T0 Blade

- YES
- POSSIBLE
- Vascular
- Guard cells
- Trichomes
- Mesophyll

T0 Sheath

- YES
- POSSIBLE
- Collar
- Vascular
- Trichomes
- Guard cells
- Mesophyll

T1 Seed

- YES
- POSSIBLE
- Embryo
- Coleorhiza
- Scutellum
- Aleurone/Endo.
- Vasc. bundle

T1 Seedling

- YES
- POSSIBLE
- SHOOT
- ROOT
- ENDOSPERM
- Coleoptile
- Sheath tissue
- Blade tissue
- Leaf tip
- Collar
- Trichomes
- Guard cells
- S. vascular
- Seminal root
- Crown roots
- Lateral roots
- Root cap
- Root apex
- R. stele
- R. cortex/end.
- R. epidermis
- Constitutive

T1 Mature

T0 pattern verified:

T0 pattern verified plus:

New pattern:

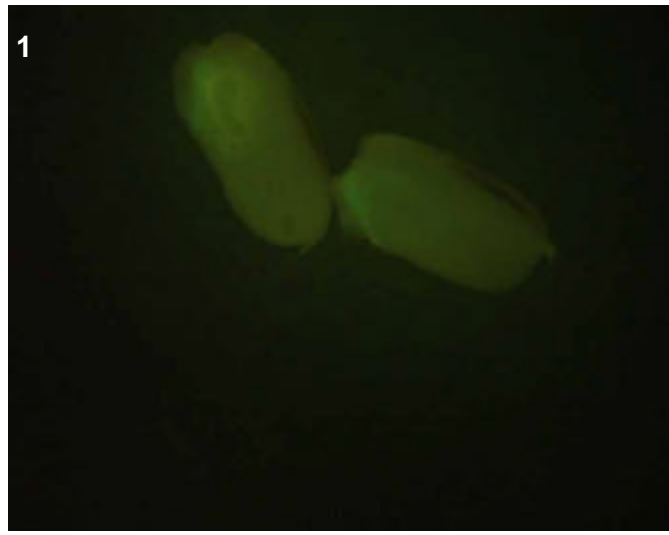
No GFP detected

T1 in greenhouse?
YES, 3 GFP+ plants

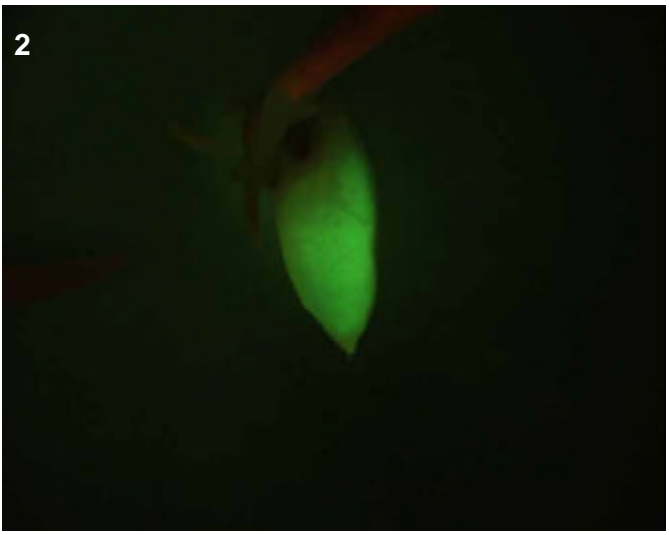
Confocal?

Number T2 seed produced:

1



2



T0 comments

T1 seed comments

4/5 seeds had faint expression

T1 seedling comments

Genotype: ASI G07

Screened

- T0 mature plant
- T1 seed
- T1 seedling
- T1 mature plants

Expression

- None
- Bright
- Medium
- Weak
- Unsure

Pictures

T0 mature plant:

T1 seed/seedling: 1

T1 mature plant:

T0 Flower

- YES
- POSSIBLE
- Stamen: anther
- Stamen: filament
- Carpel: stigma
- Carpel: style
- Carpel: ovary
- Carpel: base
- Lemma/palea
- Lodicule
- Rachilla
- Sterile lemma
- Pedicel
- Guard cells
- Trichomes
- Vascular

T0 Blade

- YES
- POSSIBLE
- Vascular
- Guard cells
- Trichomes
- Mesophyll

T0 Sheath

- YES
- POSSIBLE
- Collar
- Vascular
- Trichomes
- Guard cells
- Mesophyll

T1 Seed

- YES
- POSSIBLE
- Embryo
- Coleorhiza
- Scutellum
- Aleurone/Endo.
- Vasc. bundle

T1 Seedling

- YES
- POSSIBLE
- SHOOT
- ROOT
- ENDOSPERM
- Coleoptile
- Sheath tissue
- Blade tissue
- Leaf tip
- Collar
- Trichomes
- Guard cells
- S. vascular
- Seminal root
- Crown roots
- Lateral roots
- Root cap
- Root apex
- R. stele
- R. cortex/end.
- R. epidermis
- Constitutive

T1 Mature

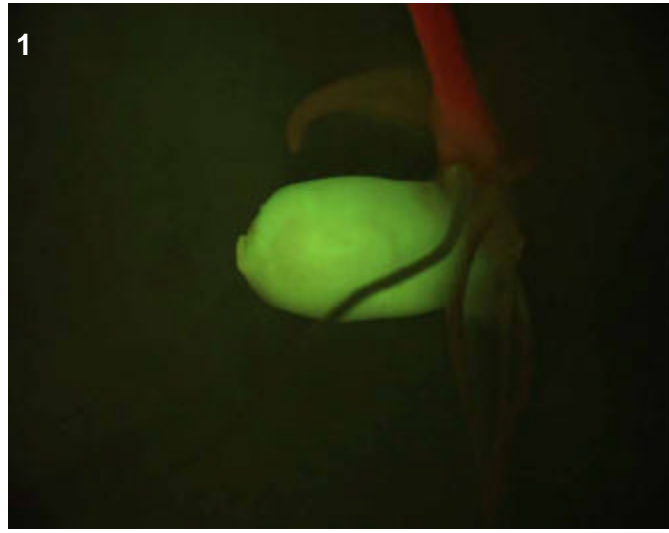
- T0 pattern verified:
- T0 pattern verified plus:
- New pattern:
- No GFP detected

T1 in greenhouse?

YES, 1 GFP+ plant

Confocal?

Number T2 seed produced:



T0 comments

T1 seed comments

T1 seedling comments

Genotype: ASK F05

Screened

- T0 mature plant
- T1 seed
- T1 seedling
- T1 mature plants

Expression

- None
- Bright
- Medium
- Weak
- Unsure

Pictures

T0 mature plant:

T1 seed/seedling: 1-2

T1 mature plant:

T0 Flower

- YES
- POSSIBLE
- Stamen: anther
- Stamen: filament
- Carpel: stigma
- Carpel: style
- Carpel: ovary
- Carpel: base
- Lemma/palea
- Lodicule
- Rachilla
- Sterile lemma
- Pedicel
- Guard cells
- Trichomes
- Vascular

T0 Blade

- YES
- POSSIBLE
- Vascular
- Guard cells
- Trichomes
- Mesophyll

T0 Sheath

- YES
- POSSIBLE
- Collar
- Vascular
- Trichomes
- Guard cells
- Mesophyll

T1 Seed

- YES
- POSSIBLE
- Embryo
- Coleorhiza
- Scutellum
- Aleurone/Endo.
- Vasc. bundle

T1 Seedling

- YES
- POSSIBLE
- SHOOT
- ROOT
- ENDOSPERM
- Coleoptile
- Sheath tissue
- Blade tissue
- Leaf tip
- Collar
- Trichomes
- Guard cells
- S. vascular
- Seminal root
- Crown roots
- Lateral roots
- Root cap
- Root apex
- R. stele
- R. cortex/end.
- R. epidermis
- Constitutive

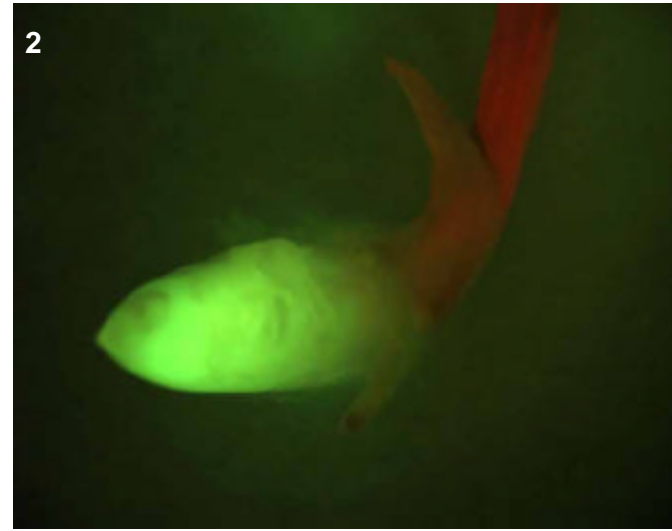
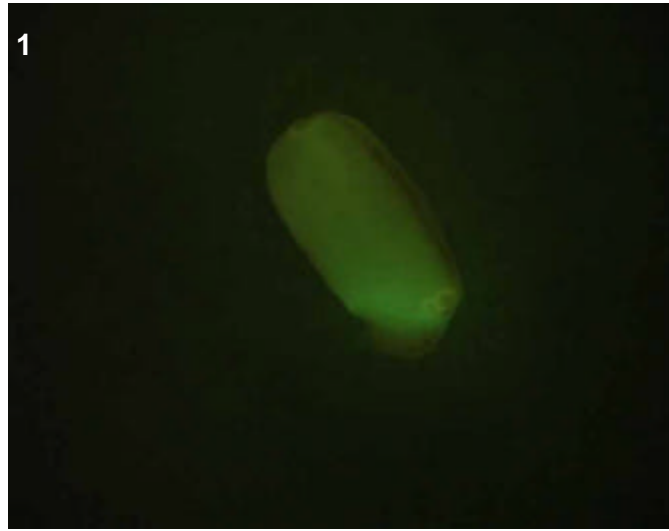
T1 Mature

- T0 pattern verified:
- T0 pattern verified plus:
- New pattern:
- No GFP detected

T1 in greenhouse?
YES, 3 GFP+ plants

Confocal?

Number T2 seed produced:



T0 comments

T1 seed comments

2/5 seeds had expression

T1 seedling comments

Perhaps a mutant line, no seminal roots and aborted crown roots (pic 2).

Genotype: ASP F01

Screened

- T0 mature plant
- T1 seed
- T1 seedling
- T1 mature plants

Expression

- None
- Bright
- Medium
- Weak
- Unsure

Pictures

T0 mature plant:

T1 seed/seedling: 1

T1 mature plant:

T0 Flower

- YES
- POSSIBLE
- Stamen: anther
- Stamen: filament
- Carpel: stigma
- Carpel: style
- Carpel: ovary
- Carpel: base
- Lemma/palea
- Lodicule
- Rachilla
- Sterile lemma
- Pedicel
- Guard cells
- Trichomes
- Vascular

T0 Blade

- YES
- POSSIBLE
- Vascular
- Guard cells
- Trichomes
- Mesophyll

T0 Sheath

- YES
- POSSIBLE
- Collar
- Vascular
- Trichomes
- Guard cells
- Mesophyll

T1 Seed

- YES
- POSSIBLE
- Embryo
- Coleorhiza
- Scutellum
- Aleurone/Endo.
- Vasc. bundle

T1 Seedling

- YES
- POSSIBLE
- SHOOT
- ROOT
- ENDOSPERM
- Coleoptile
- Sheath tissue
- Blade tissue
- Leaf tip
- Collar
- Trichomes
- Guard cells
- S. vascular
- Seminal root
- Crown roots
- Lateral roots
- Root cap
- Root apex
- R. stele
- R. cortex/end.
- R. epidermis
- Constitutive

T1 Mature

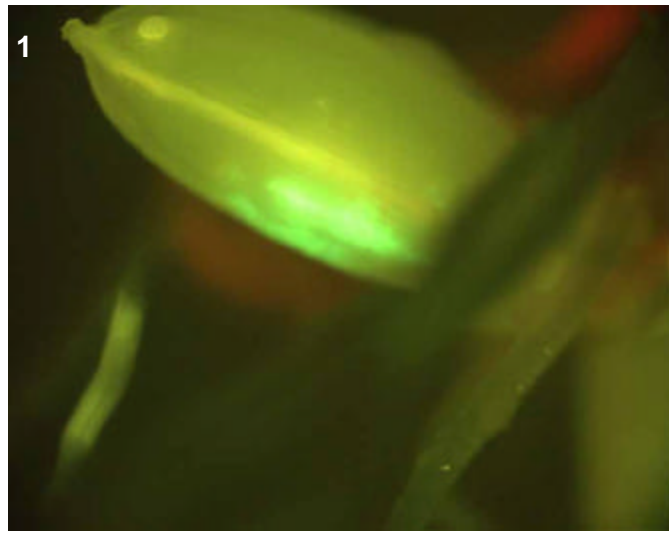
- T0 pattern verified:
- T0 pattern verified plus:
- New pattern:
- No GFP detected

T1 in greenhouse?

YES, 1 GFP+ plant

Confocal?

Number T2 seed produced:



T0 comments

T1 seed comments

T1 seedling comments

Genotype: ASQ E12

Screened

- T0 mature plant
- T1 seed
- T1 seedling
- T1 mature plants

Expression

- None
- Bright
- Medium
- Weak
- Unsure

Pictures

T0 mature plant:

T1 seed/seedling: 1

T1 mature plant:

T0 Flower

- YES
- POSSIBLE
- Stamen: anther
- Stamen: filament
- Carpel: stigma
- Carpel: style
- Carpel: ovary
- Carpel: base
- Lemma/palea
- Lodicule
- Rachilla
- Sterile lemma
- Pedicel
- Guard cells
- Trichomes
- Vascular

T0 Blade

- YES
- POSSIBLE
- Vascular
- Guard cells
- Trichomes
- Mesophyll

T0 Sheath

- YES
- POSSIBLE
- Collar
- Vascular
- Trichomes
- Guard cells
- Mesophyll

T1 Seed

- YES
- POSSIBLE
- Embryo
- Coleorhiza
- Scutellum
- Aleurone/Endo.
- Vasc. bundle

T1 Seedling

- YES
- POSSIBLE
- SHOOT
- ROOT
- ENDOSPERM
- Coleoptile
- Sheath tissue
- Blade tissue
- Leaf tip
- Collar
- Trichomes
- Guard cells
- S. vascular
- Seminal root
- Crown roots
- Lateral roots
- Root cap
- Root apex
- R. stele
- R. cortex/end.
- R. epidermis
- Constitutive

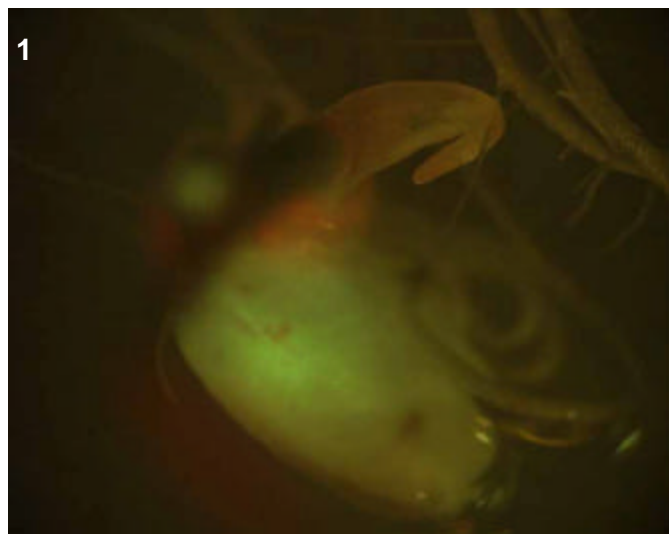
T1 Mature

- T0 pattern verified:
- T0 pattern verified plus:
- New pattern:
- No GFP detected

T1 in greenhouse?
YES, 3 GFP+ plants

Confocal?

Number T2 seed produced:



T0 comments

T1 seed comments

2/5 seeds had faint expression (no picture taken)

T1 seedling comments

Genotype: ASQ H12

Screened

- T0 mature plant
- T1 seed
- T1 seedling
- T1 mature plants

Expression

- None
- Bright
- Medium
- Weak
- Unsure

Pictures

T0 mature plant:

T1 seed/seedling: 1

T1 mature plant:

T0 Flower

- YES
- POSSIBLE
- Stamen: anther
- Stamen: filament
- Carpel: stigma
- Carpel: style
- Carpel: ovary
- Carpel: base
- Lemma/palea
- Lodicule
- Rachilla
- Sterile lemma
- Pedicel
- Guard cells
- Trichomes
- Vascular

T0 Blade

- YES
- POSSIBLE
- Vascular
- Guard cells
- Trichomes
- Mesophyll

T0 Sheath

- YES
- POSSIBLE
- Collar
- Vascular
- Trichomes
- Guard cells
- Mesophyll

T1 Seed

- YES
- POSSIBLE
- Embryo
- Coleorhiza
- Scutellum
- Aleurone/Endo.
- Vasc. bundle

T1 Seedling

- YES
- POSSIBLE
- SHOOT
- ROOT
- ENDOSPERM
- Coleoptile
- Sheath tissue
- Blade tissue
- Leaf tip
- Collar
- Trichomes
- Guard cells
- S. vascular
- Seminal root
- Crown roots
- Lateral roots
- Root cap
- Root apex
- R. stele
- R. cortex/end.
- R. epidermis
- Constitutive

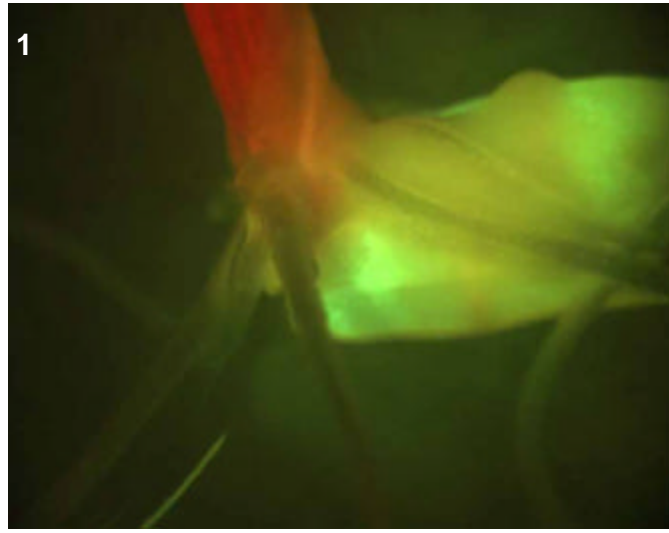
T1 Mature

- T0 pattern verified:
- T0 pattern verified plus:
- New pattern:
- No GFP detected

T1 in greenhouse?
 YES, 2 GFP+ plants

Confocal?

Number T2 seed produced:



T0 comments

T1 seed comments

T1 seedling comments

Genotype: ASR A07

Screened

- T0 mature plant
- T1 seed
- T1 seedling
- T1 mature plants

Expression

- None
- Bright
- Medium
- Weak
- Unsure

Pictures

T0 mature plant:

T1 seed/seedling: 1

T1 mature plant:

T0 Flower

- YES
- POSSIBLE
- Stamen: anther
- Stamen: filament
- Carpel: stigma
- Carpel: style
- Carpel: ovary
- Carpel: base
- Lemma/palea
- Lodicule
- Rachilla
- Sterile lemma
- Pedicel
- Guard cells
- Trichomes
- Vascular

T0 Blade

- YES
- POSSIBLE
- Vascular
- Guard cells
- Trichomes
- Mesophyll

T0 Sheath

- YES
- POSSIBLE
- Collar
- Vascular
- Trichomes
- Guard cells
- Mesophyll

T1 Seed

- YES
- POSSIBLE
- Embryo
- Coleorhiza
- Scutellum
- Aleurone/Endo.
- Vasc. bundle

T1 Seedling

- YES
- POSSIBLE
- SHOOT
- ROOT
- ENDOSPERM
- Coleoptile
- Sheath tissue
- Blade tissue
- Leaf tip
- Collar
- Trichomes
- Guard cells
- S. vascular
- Seminal root
- Crown roots
- Lateral roots
- Root cap
- Root apex
- R. stele
- R. cortex/end.
- R. epidermis
- Constitutive

T1 Mature

T0 pattern verified:

T0 pattern verified plus:

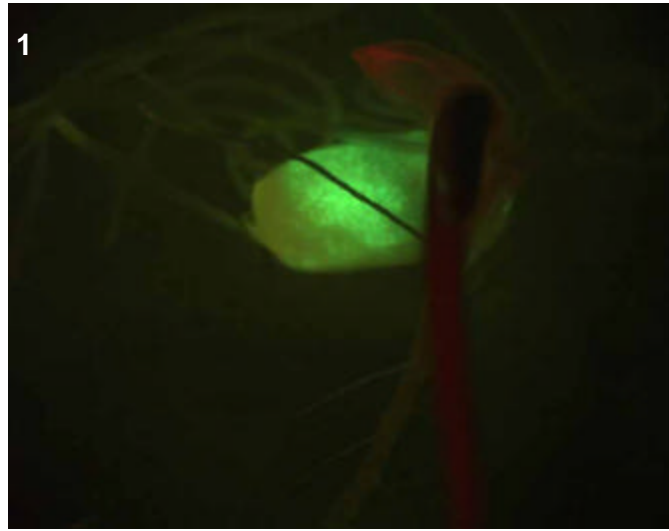
New pattern:

No GFP detected

T1 in greenhouse?
YES, 3 GFP+ plants

Confocal?

Number T2 seed produced: 0



T0 comments

T1 seed comments

T1 seedling comments

A bright endosperm-specific line (picture 1).

Genotype: ASU B04

Screened

- T0 mature plant
- T1 seed
- T1 seedling
- T1 mature plants

Expression

- None
- Bright
- Medium
- Weak
- Unsure

Pictures

T0 mature plant:

T1 seed/seedling: 1

T1 mature plant:

T0 Flower

- YES
- POSSIBLE
- Stamen: anther
- Stamen: filament
- Carpel: stigma
- Carpel: style
- Carpel: ovary
- Carpel: base
- Lemma/palea
- Lodicule
- Rachilla
- Sterile lemma
- Pedicel
- Guard cells
- Trichomes
- Vascular

T0 Blade

- YES
- POSSIBLE
- Vascular
- Guard cells
- Trichomes
- Mesophyll

T0 Sheath

- YES
- POSSIBLE
- Collar
- Vascular
- Trichomes
- Guard cells
- Mesophyll

T1 Seed

- YES
- POSSIBLE
- Embryo
- Coleorhiza
- Scutellum
- Aleurone/Endo.
- Vasc. bundle

T1 Seedling

- YES
- POSSIBLE
- SHOOT
- ROOT
- ENDOSPERM
- Coleoptile
- Sheath tissue
- Blade tissue
- Leaf tip
- Collar
- Trichomes
- Guard cells
- S. vascular
- Seminal root
- Crown roots
- Lateral roots
- Root cap
- Root apex
- R. stele
- R. cortex/end.
- R. epidermis
- Constitutive

T1 Mature

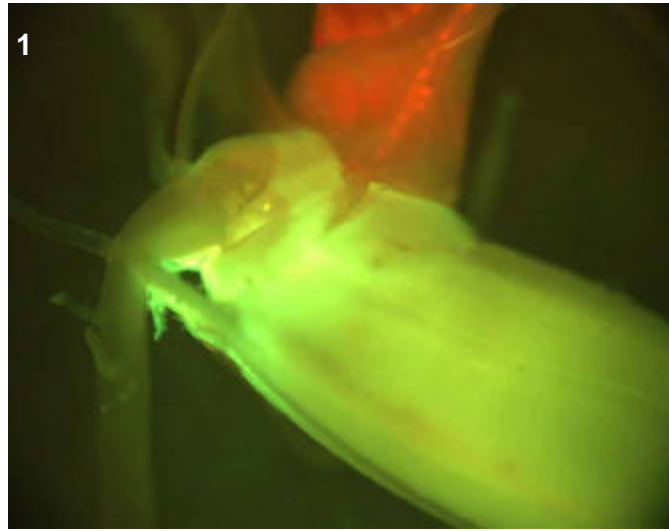
- T0 pattern verified:
- T0 pattern verified plus:
- New pattern:
- No GFP detected

T1 in greenhouse?

YES, 1 GFP+ plant

Confocal?

Number T2 seed produced:



T0 comments

T1 seed comments

T1 seedling comments

Genotype: ASV E11

Screened

- T0 mature plant
- T1 seed
- T1 seedling
- T1 mature plants

Expression

- None
- Bright
- Medium
- Weak
- Unsure

Pictures

T0 mature plant:

T1 seed/seedling: 1-2

T1 mature plant:

T0 Flower

- YES
- POSSIBLE
- Stamen: anther
- Stamen: filament
- Carpel: stigma
- Carpel: style
- Carpel: ovary
- Carpel: base
- Lemma/palea
- Lodicule
- Rachilla
- Sterile lemma
- Pedicel
- Guard cells
- Trichomes
- Vascular

T0 Blade

- YES
- POSSIBLE
- Vascular
- Guard cells
- Trichomes
- Mesophyll

T0 Sheath

- YES
- POSSIBLE
- Collar
- Vascular
- Trichomes
- Guard cells
- Mesophyll

T1 Seed

- YES
- POSSIBLE
- Embryo
- Coleorhiza
- Scutellum
- Aleurone/Endo.
- Vasc. bundle

T1 Seedling

- YES
- POSSIBLE
- SHOOT
- ROOT
- ENDOSPERM
- Coleoptile
- Sheath tissue
- Blade tissue
- Leaf tip
- Collar
- Trichomes
- Guard cells
- S. vascular
- Seminal root
- Crown roots
- Lateral roots
- Root cap
- Root apex
- R. stele
- R. cortex/end.
- R. epidermis
- Constitutive

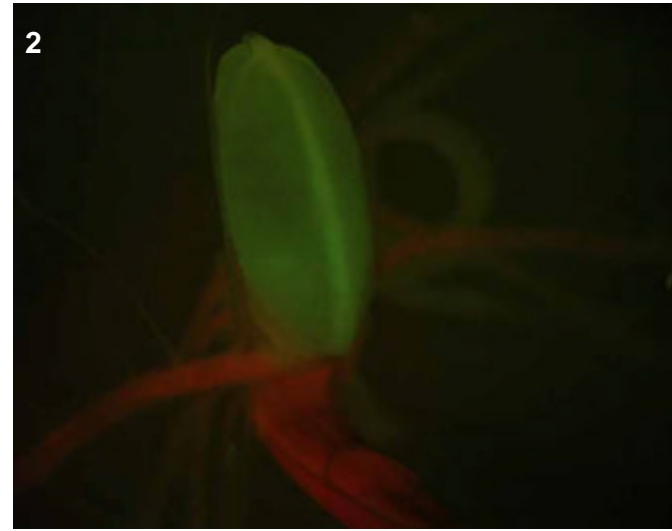
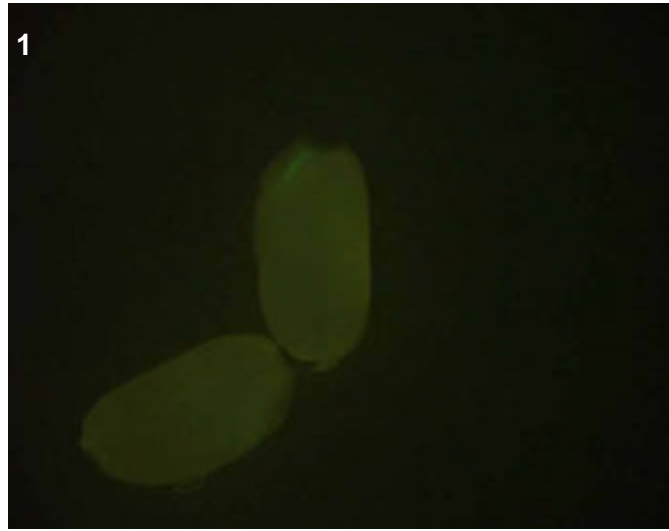
T1 Mature

- T0 pattern verified:
- T0 pattern verified plus:
- New pattern:
- No GFP detected

T1 in greenhouse?
YES, 2 GFP+ plants

Confocal?

Number T2 seed produced:



T0 comments

T1 seed comments

2/5 seeds had expression, appearing more on the upper side of the scutellum (top seed, pic 1)

T1 seedling comments

Endosperm expression (pic 2) was faint.

Genotype: ASX C08

Screened

- T0 mature plant
- T1 seed
- T1 seedling
- T1 mature plants

Expression

- None
- Bright
- Medium
- Weak
- Unsure

Pictures

T0 mature plant:

T1 seed/seedling: 1-3

T1 mature plant:

T0 Flower

- YES
- POSSIBLE
- Stamen: anther
- Stamen: filament
- Carpel: stigma
- Carpel: style
- Carpel: ovary
- Carpel: base
- Lemma/palea
- Lodicule
- Rachilla
- Sterile lemma
- Pedicel
- Guard cells
- Trichomes
- Vascular

T0 Blade

- YES
- POSSIBLE
- Vascular
- Guard cells
- Trichomes
- Mesophyll

T0 Sheath

- YES
- POSSIBLE
- Collar
- Vascular
- Trichomes
- Guard cells
- Mesophyll

T1 Seed

- YES
- POSSIBLE
- Embryo
- Coleorhiza
- Scutellum
- Aleurone/Endo.
- Vasc. bundle

T1 Seedling

- YES
- POSSIBLE
- SHOOT
- ROOT
- ENDOSPERM
- Coleoptile
- Sheath tissue
- Blade tissue
- Leaf tip
- Collar
- Trichomes
- Guard cells
- S. vascular
- Seminal root
- Crown roots
- Lateral roots
- Root cap
- Root apex
- R. stele
- R. cortex/end.
- R. epidermis
- Constitutive

T1 Mature

T0 pattern verified:

T0 pattern verified plus:

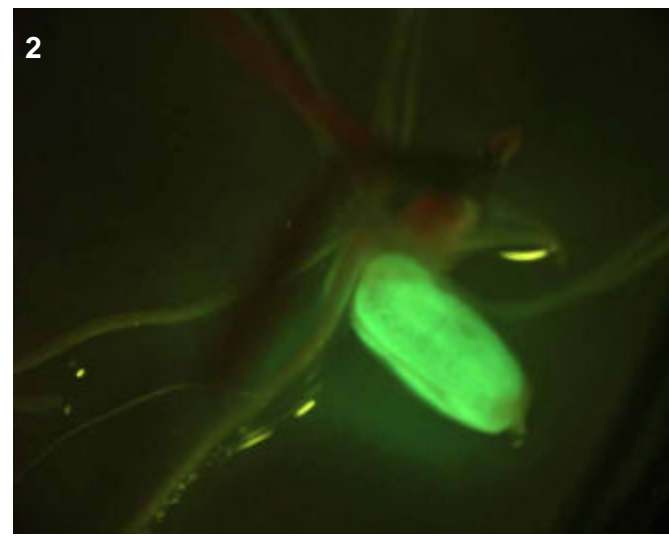
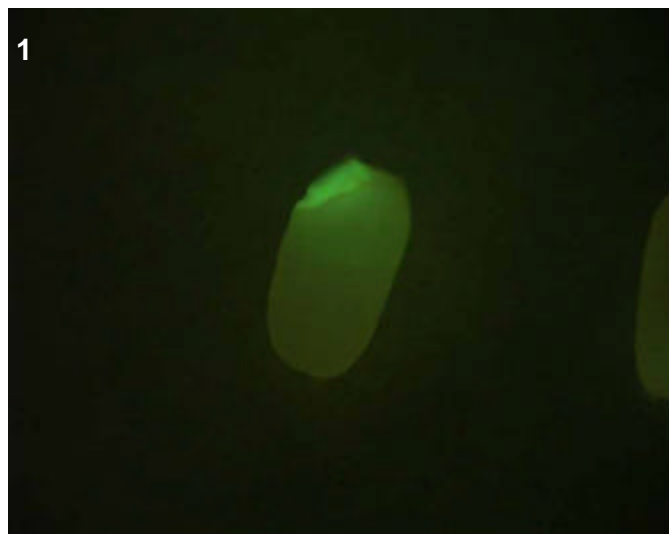
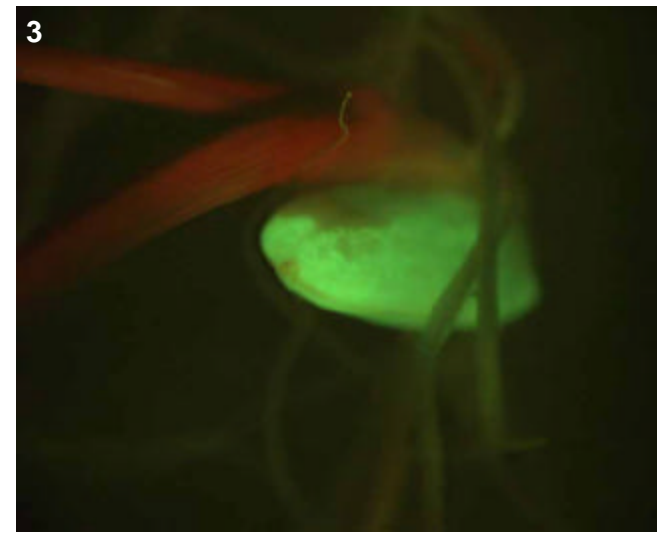
New pattern:

No GFP detected

T1 in greenhouse?
YES, 3 GFP+ plants

Confocal?

Number T2 seed produced:



T0 comments

T1 seed comments

3/5 seeds had expression.

T1 seedling comments